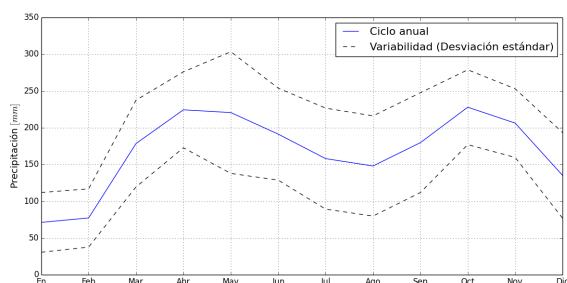
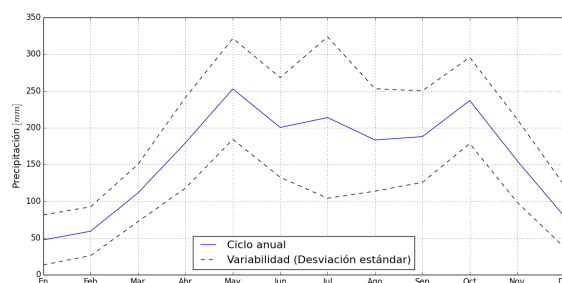


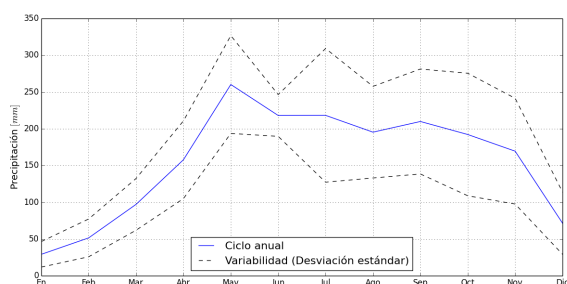
A. Anexo: Ciclo anual de precipitación en las estaciones disponibles



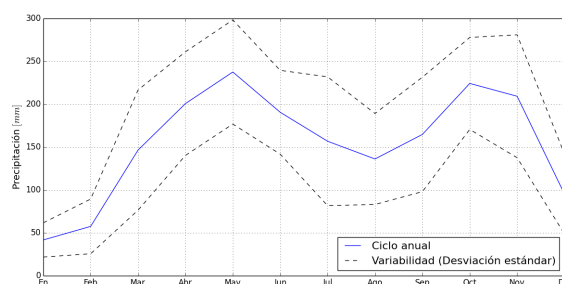
(a) El Caribe (P-3025)



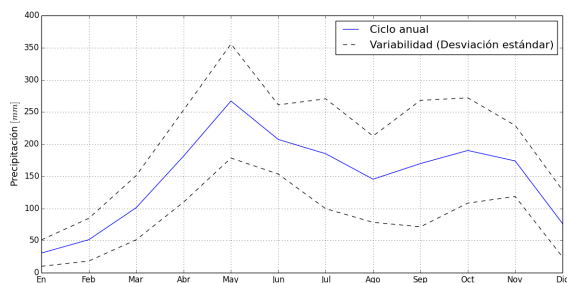
(b) San Andrés (P-1053)



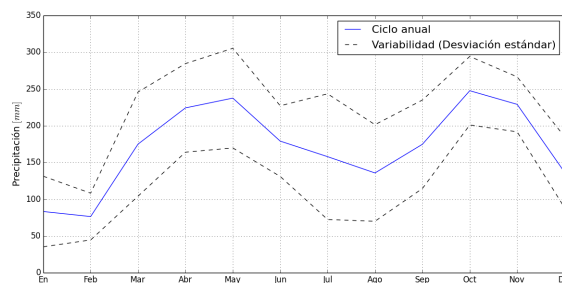
(c) Santa Rosa (P-1054)



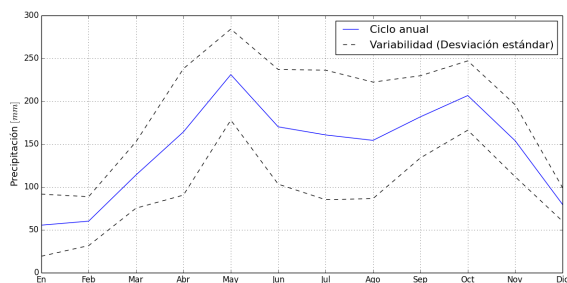
(d) Aragón (P-1053)



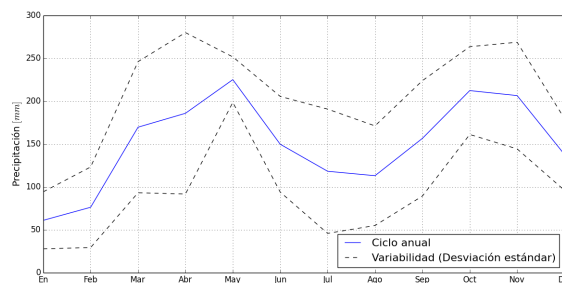
(e) El Chaquiro (P-1059)



(f) El Gómez (P-1072)

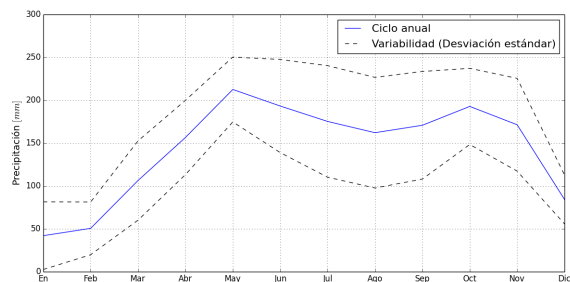


(g) Medina (P-1073)

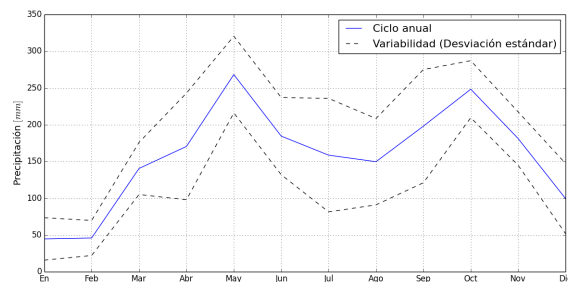


(h) Belmira (P-1074)

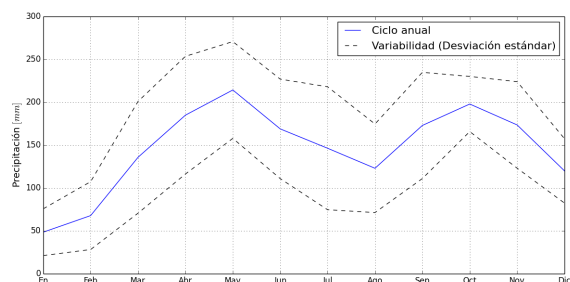
Figura A.1.: Ciclo anual de precipitación en las estaciones disponibles.



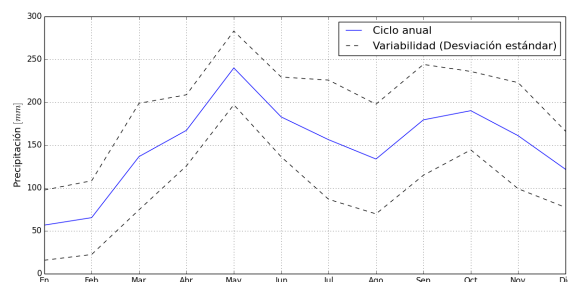
(a) Enterríos (P-1075)



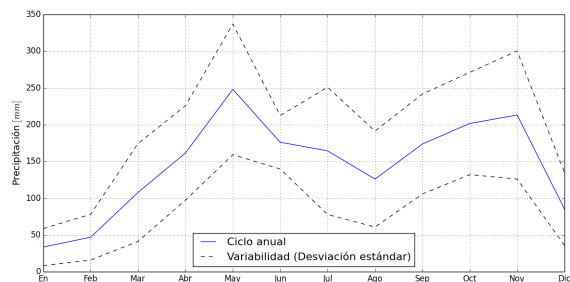
(b) San Bernardo (P-1094)



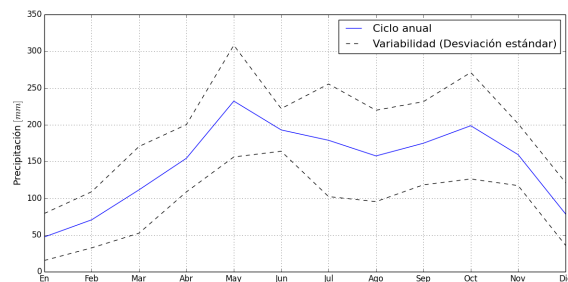
(c) La Sierra (P-1101)



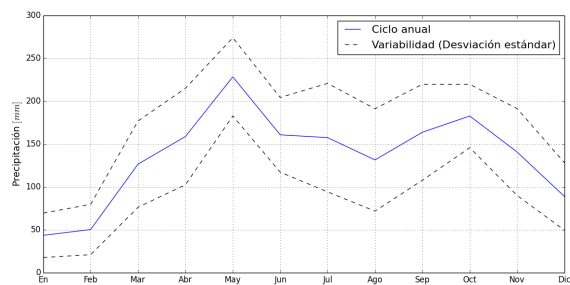
(d) El Tururo (P-1116)



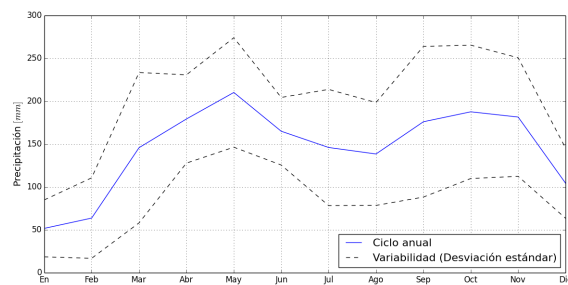
(e) Los Atajos (P-1118)



(f) Cucurucho (P-1523)

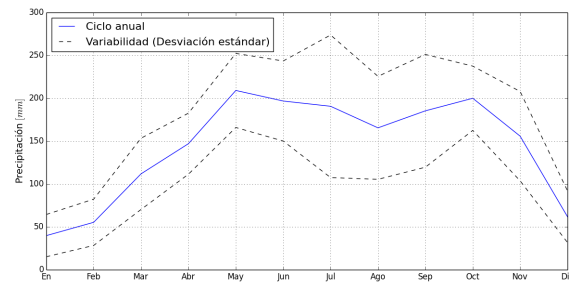


(g) San Pedro RG-10 (P-1522)



(h) El Botón RG-7 (P-1706)

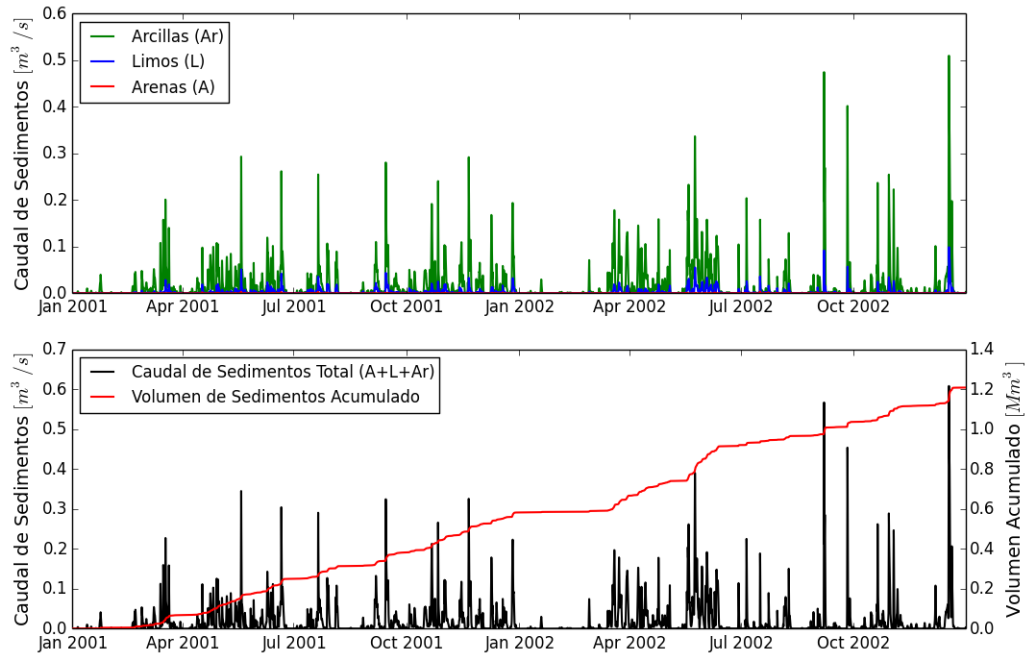
Figura A.1.: Ciclo anual de precipitación en las estaciones disponibles.



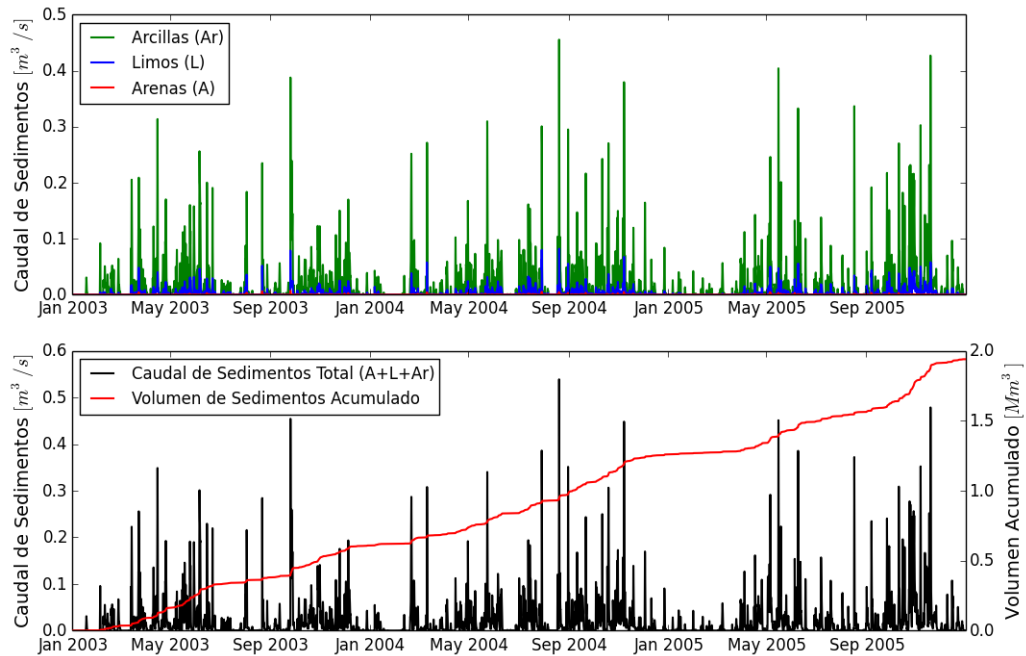
(i) Torre RG II (P-1793)

Figura A.1.: Ciclo anual de precipitación en las estaciones disponibles.
Fuente: *EPM*

B. Anexo: Sedimentogramas simulados



(a) 2001-2003



(b) 2003-2006

Figura B.0.: Sedimentogramas simulados en el sitio Presa

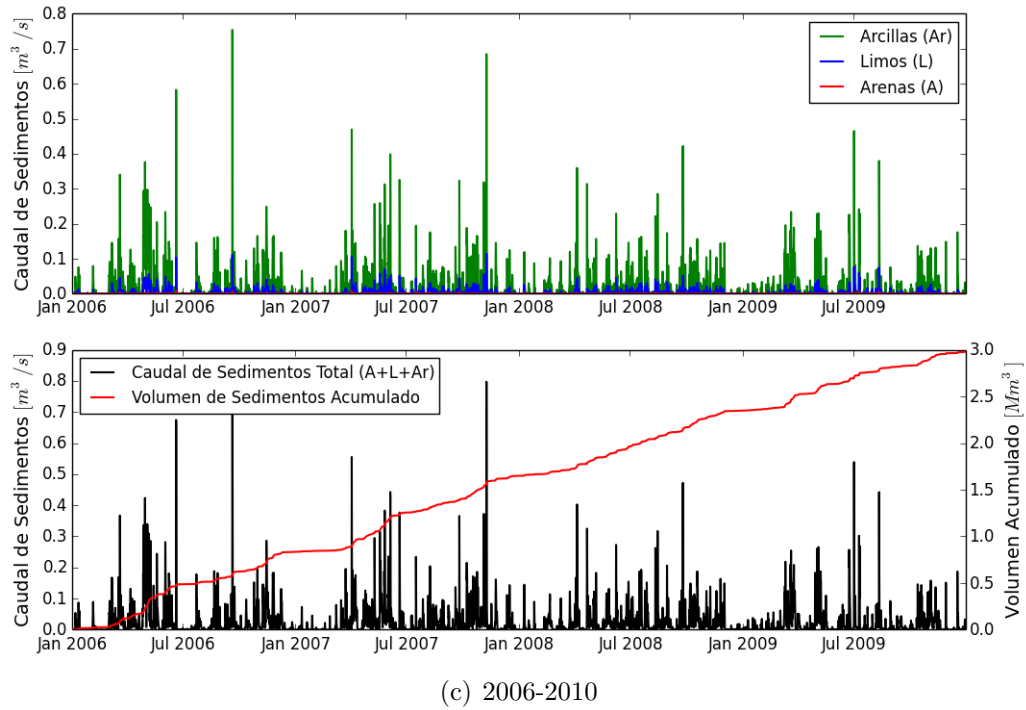


Figura B.0.: Sedimentogramas simulados en el sitio Presa

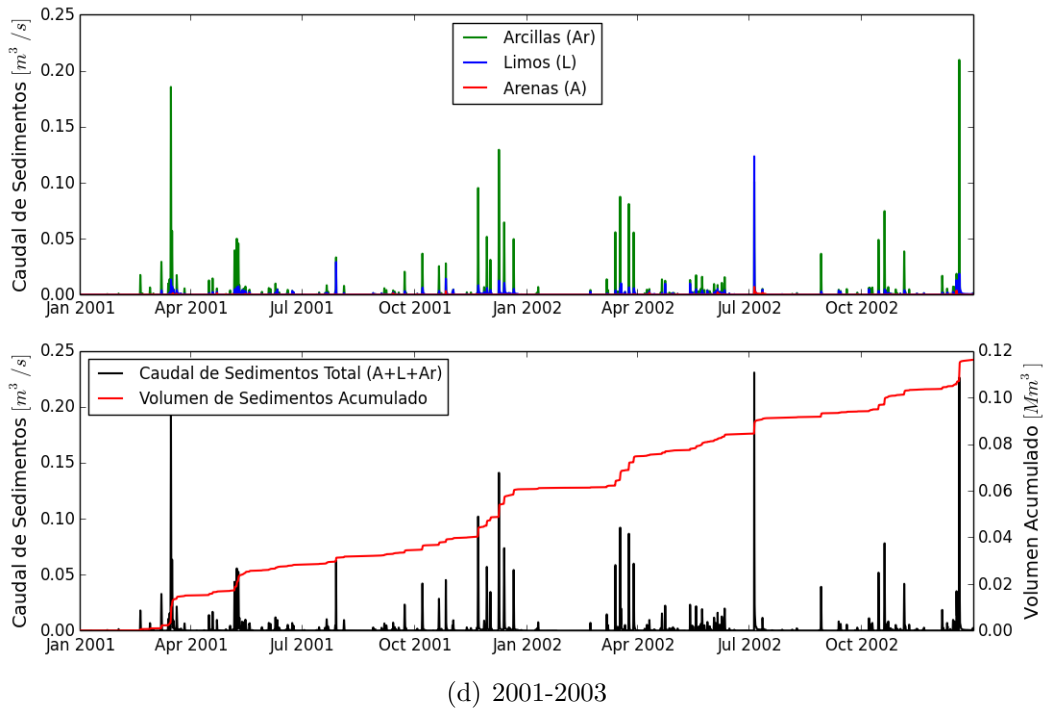
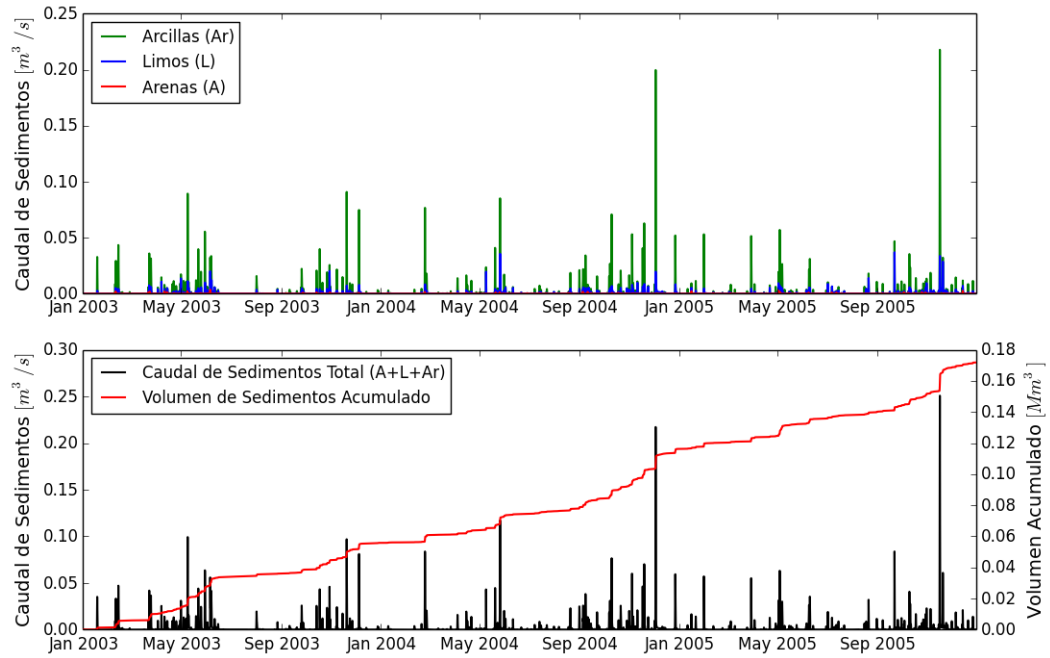
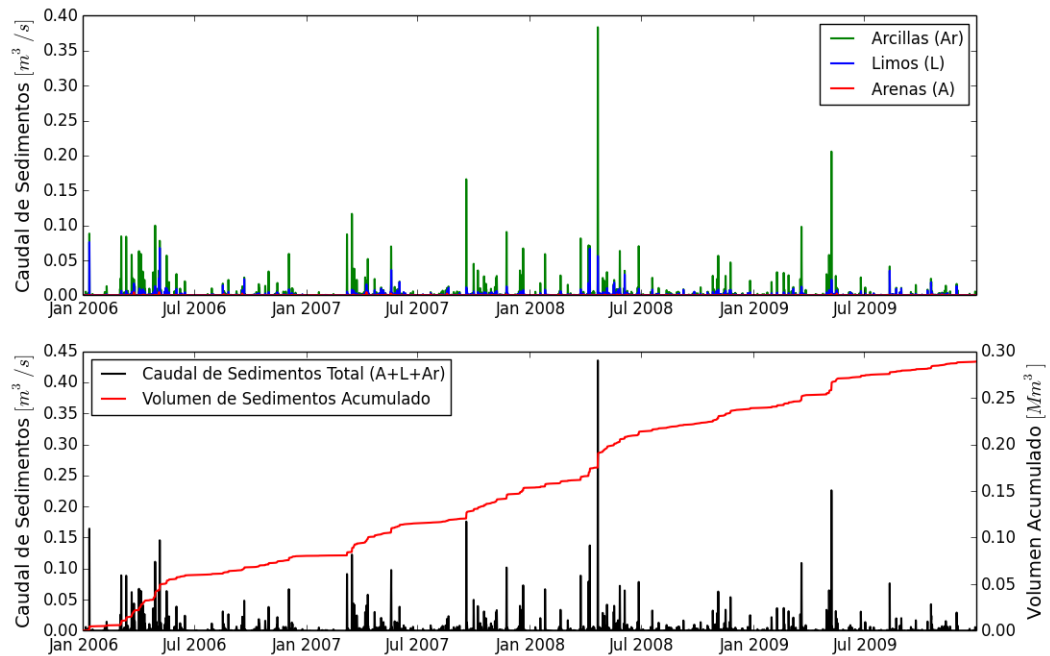


Figura B.0.: Sedimentogramas simulados en la cuenca del río Grande

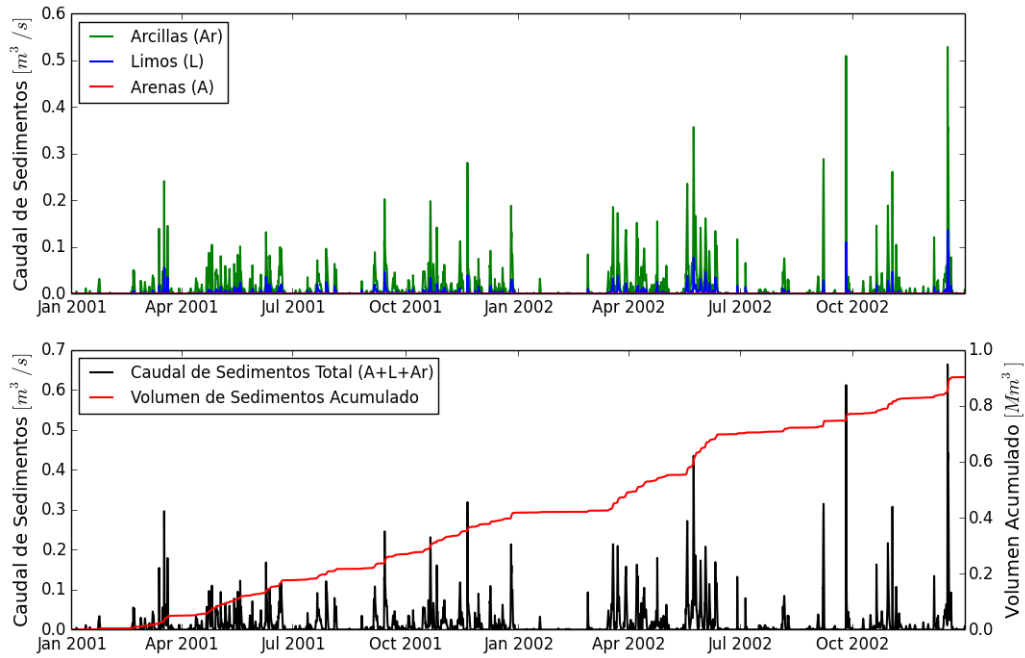


(e) 2003-2006

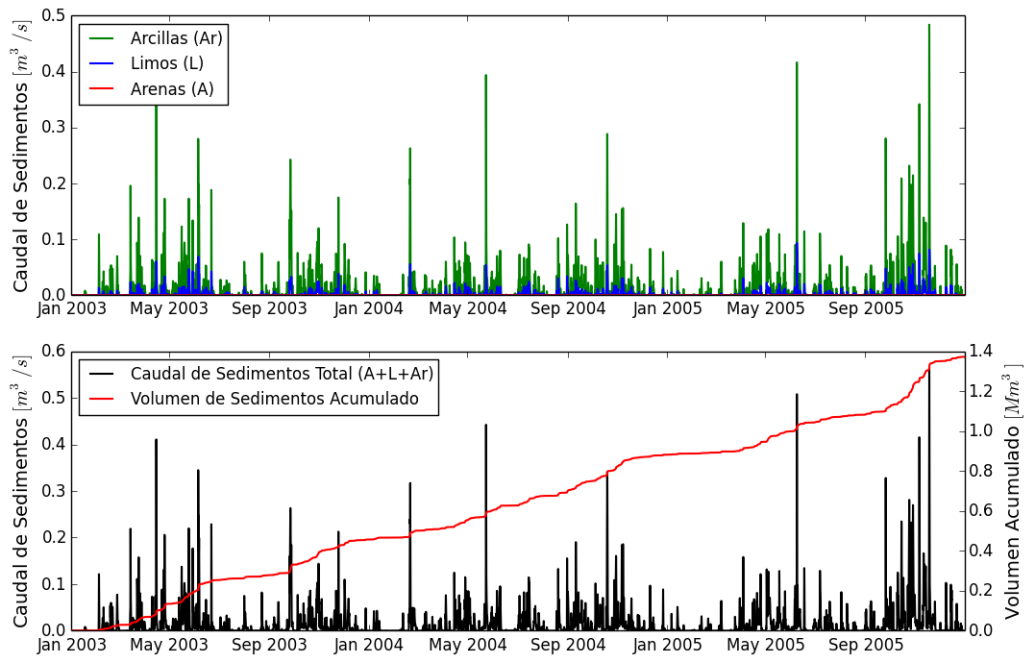


(f) 2006-2010

Figura B.0.: Sedimentogramas simulados en la cuenca del río Grande



(g) 2001-2003



(h) 2003-2006

Figura B.0.: Sedimentogramas simulados en la cuenca del río Chico

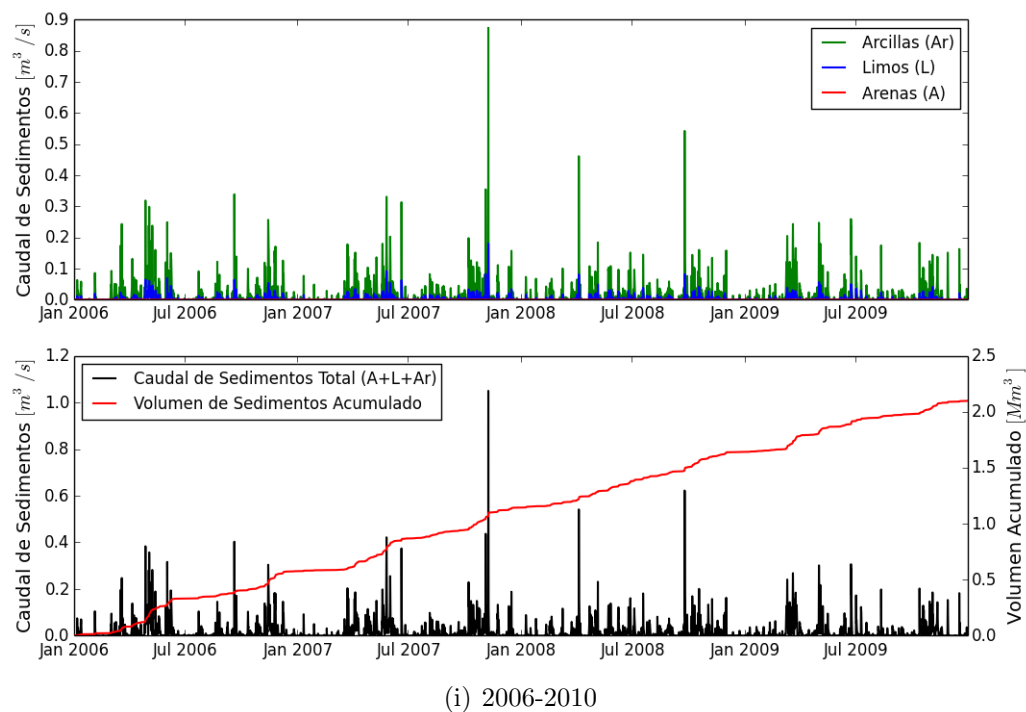


Figura B.0.: Sedimentogramas simulados en la cuenca del río Chico

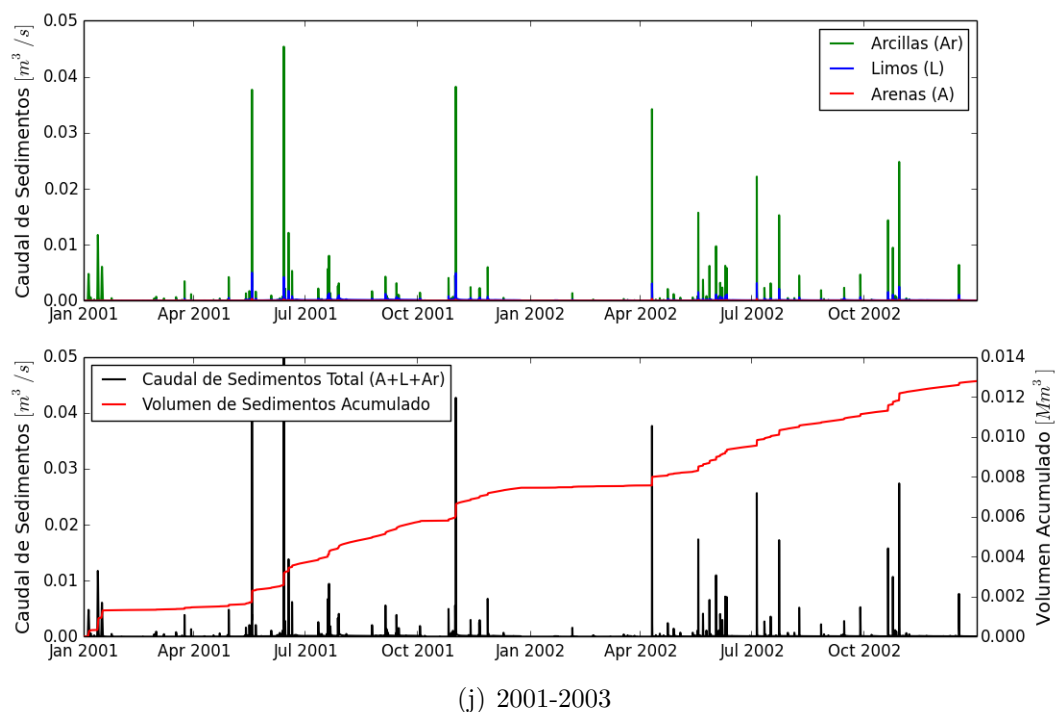
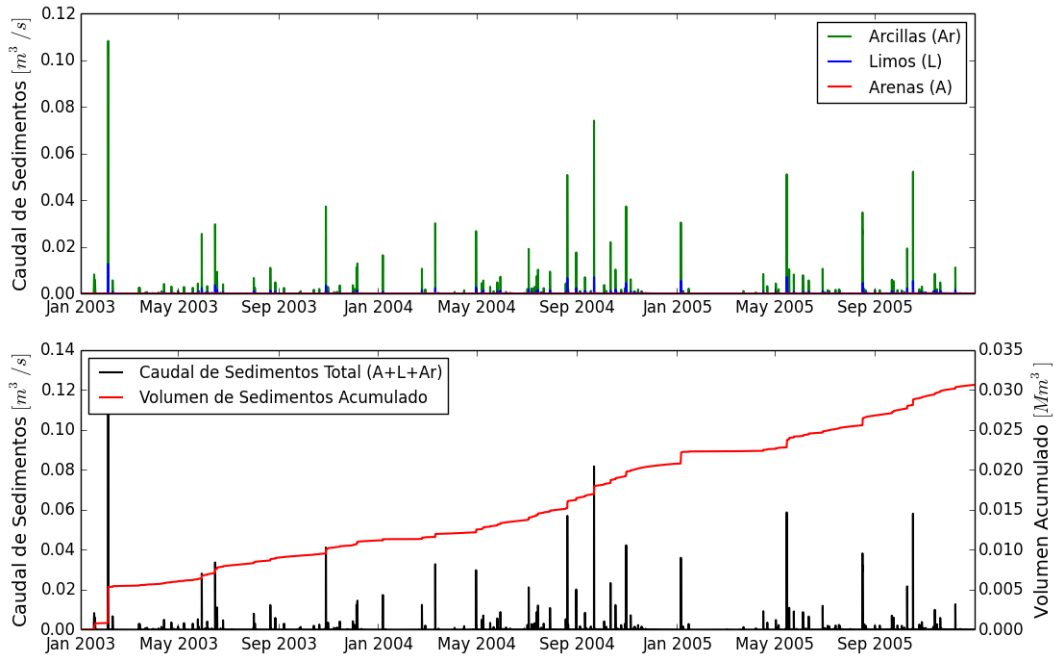
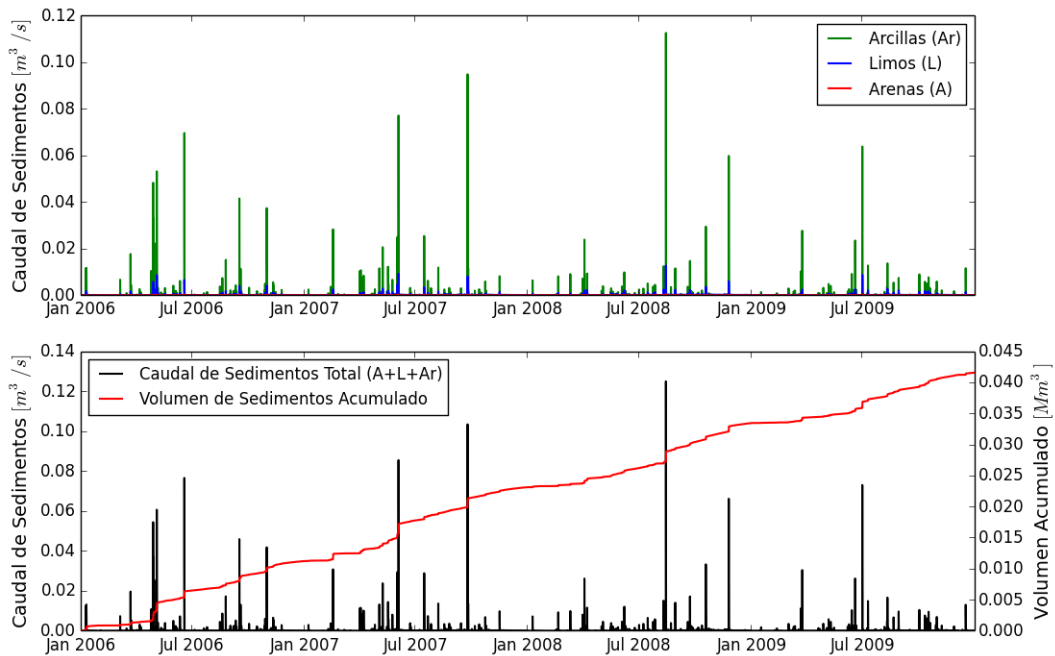


Figura B.0.: Sedimentogramas simulados en la cuenca de la quebrada Las Animas

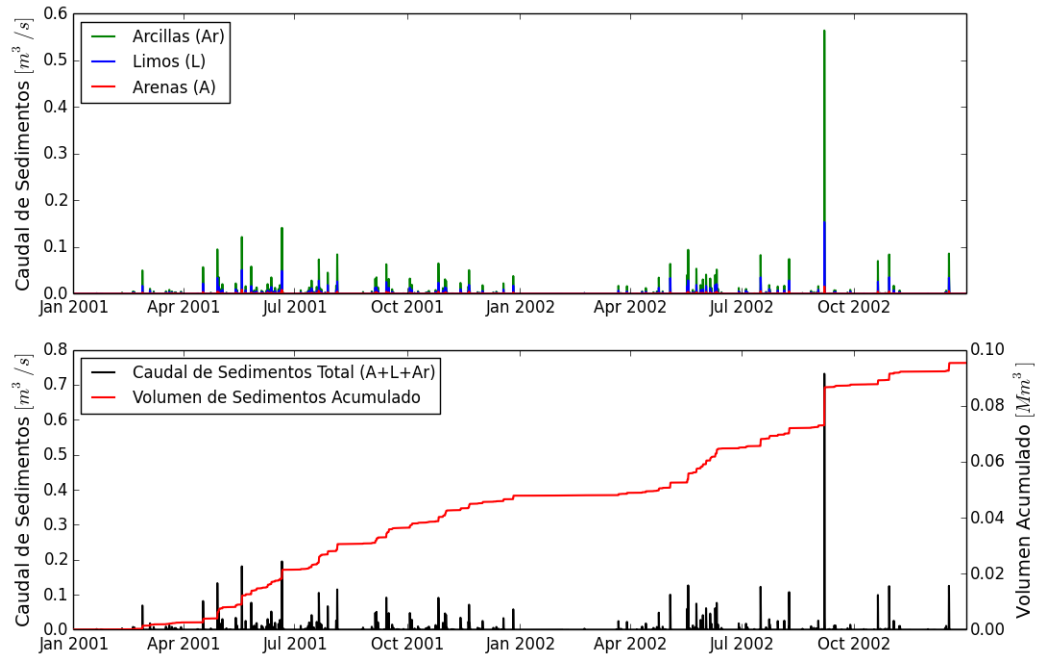


(k) 2003-2006

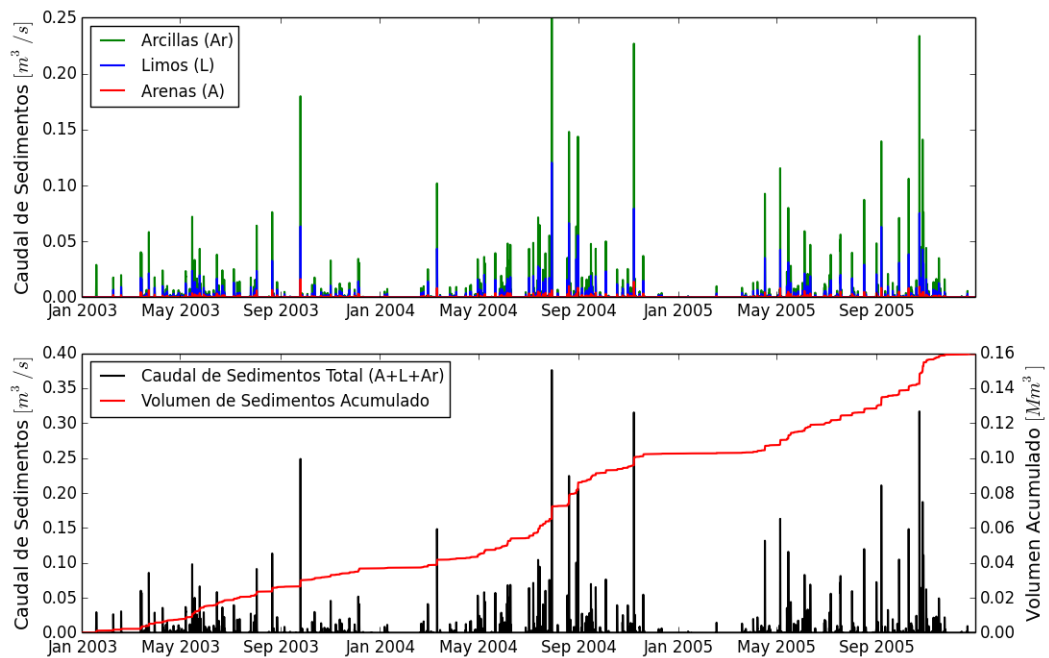


(l) 2006-2010

Figura B.0.: Sedimentogramas simulados en la cuenca de la quebrada Las Animas



(m) 2001-2003



(n) 2003-2006

Figura B.0.: Sedimentogramas simulados en la cuenca de la quebrada Don Diego

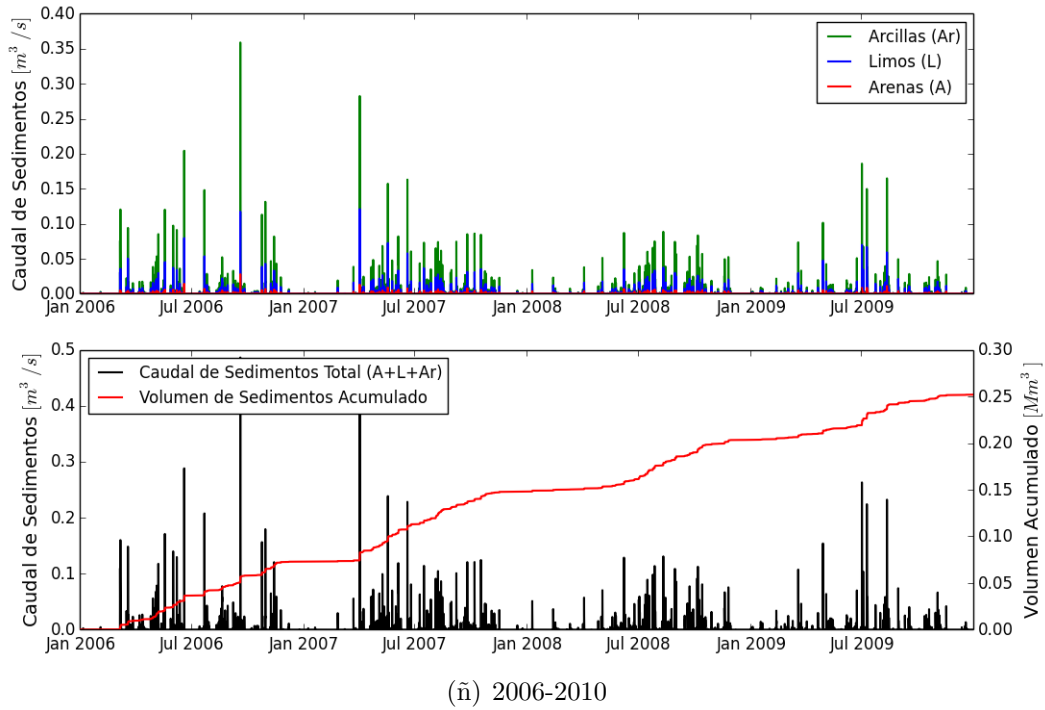


Figura B.0.: Sedimentogramas simulados en la cuenca de la quebrada Don Diego

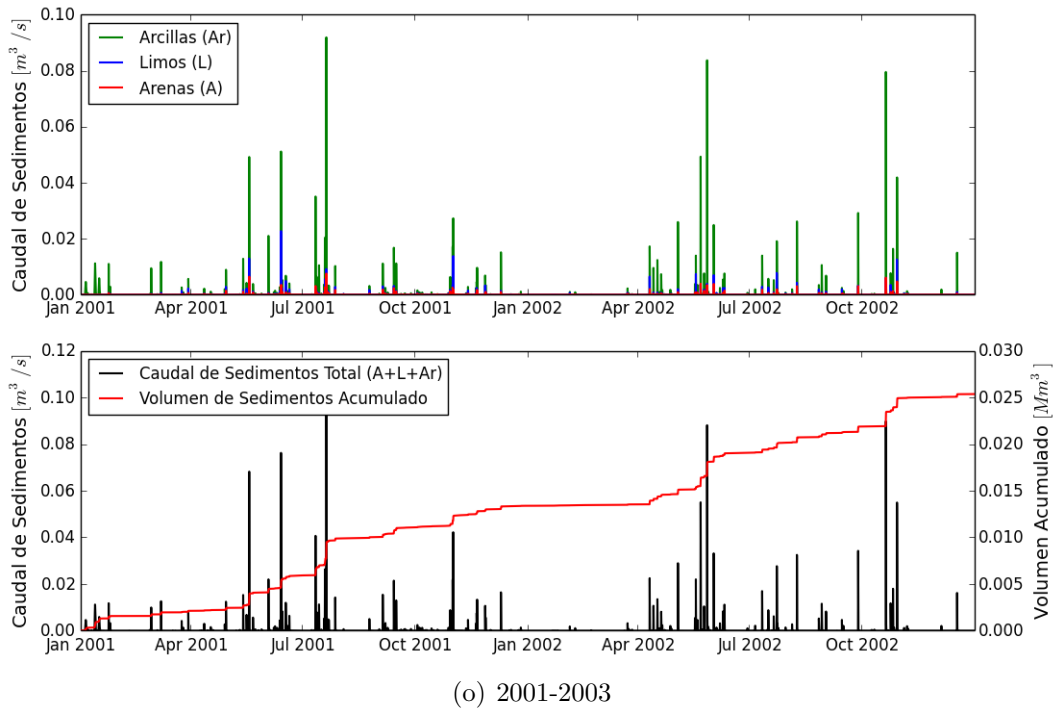


Figura B.0.: Sedimentogramas simulados en la cuenca de la quebrada Orobajo

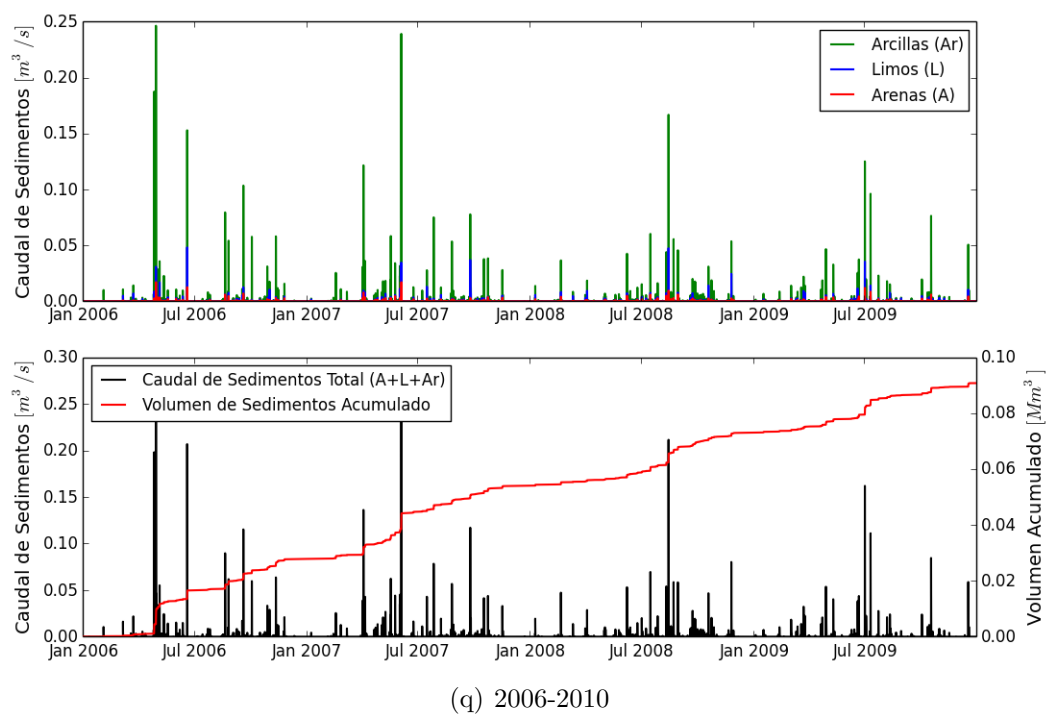
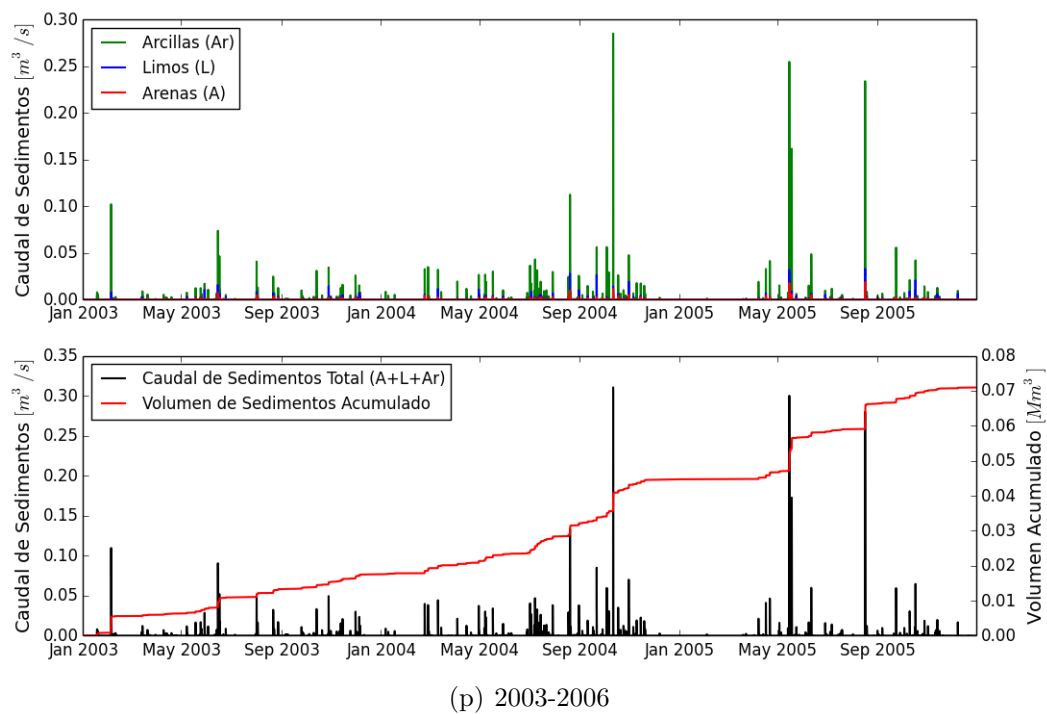


Figura B.0.: Sedimentogramas simulados en la cuenca de la quebrada Orobojo