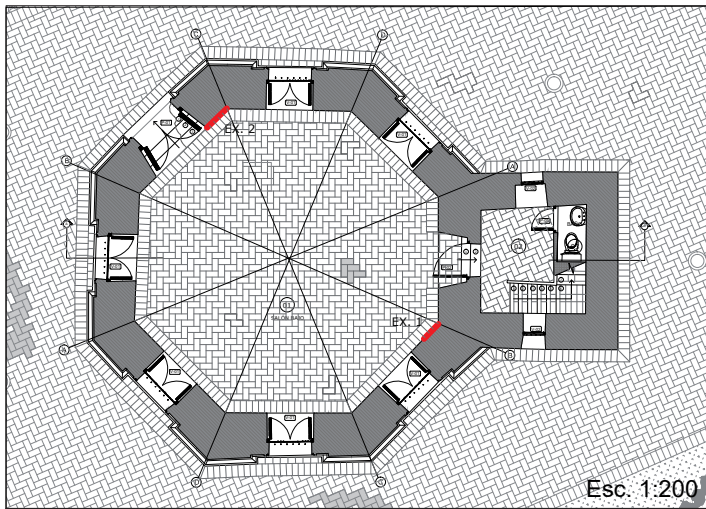
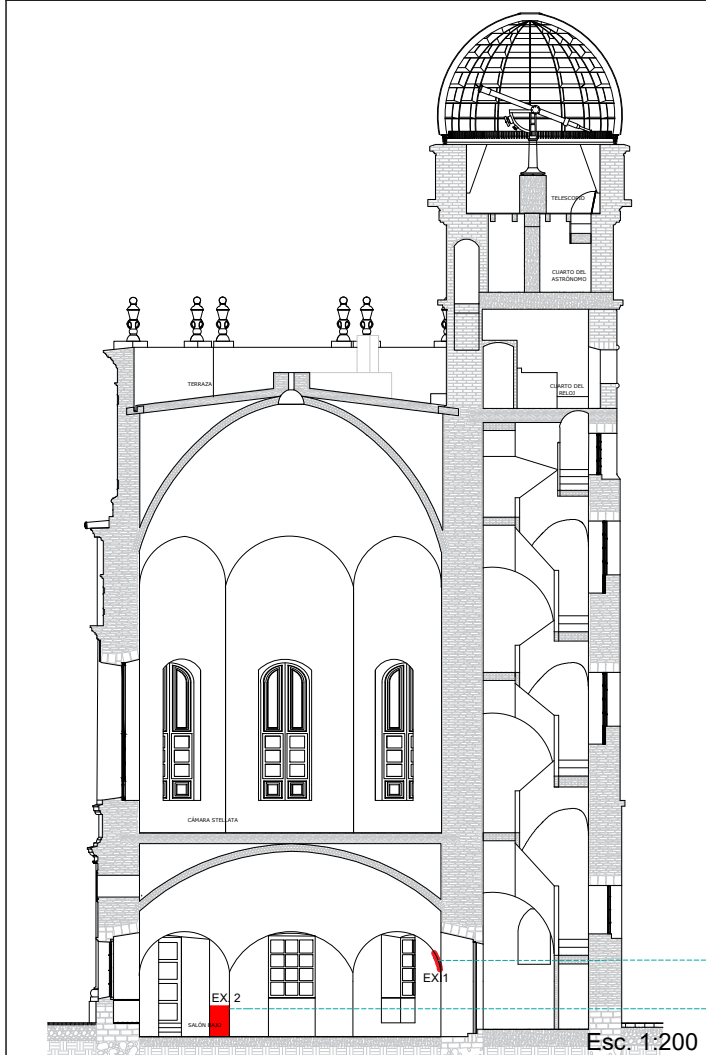


ANEXO 3

EXPLORACIONES



Esc. 1:200

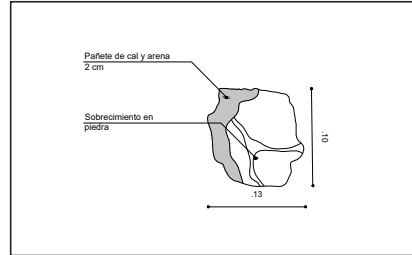
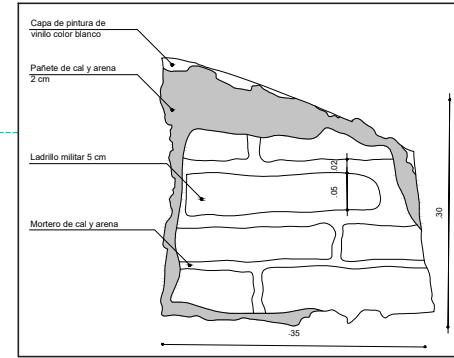


Esc. 1:200



EXPLORACIÓN 1

Ladrillo militar 5 cm aprox.
Pañete de cal y arena de 2 cm.

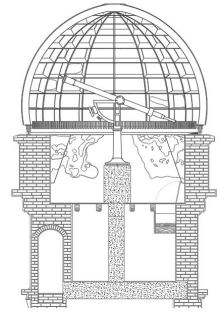


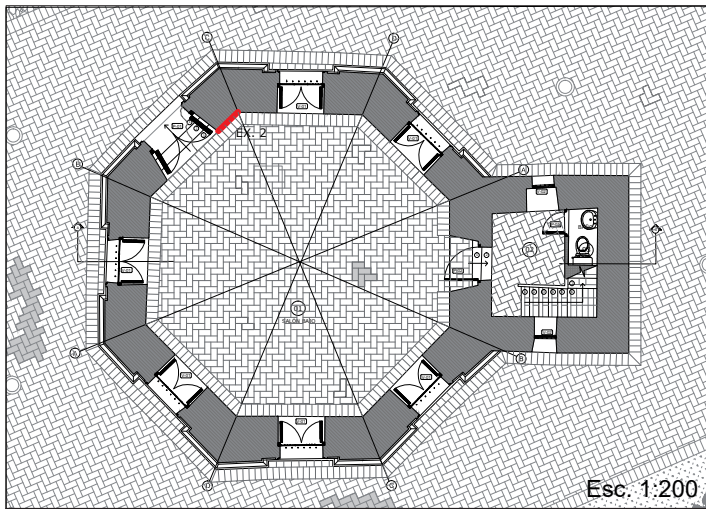
EXPLORACIÓN 2a

Sobre cemento en piedra de 80 cm.
Pañete de cal y arena de 2 cm.

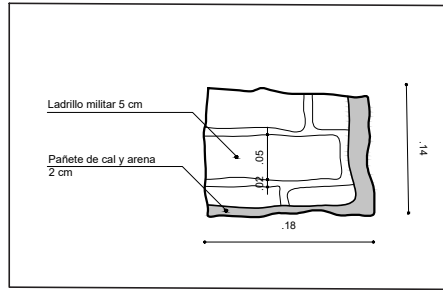


EXPLORACIÓN 2



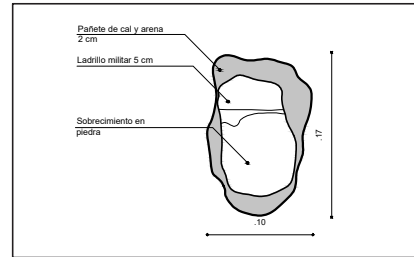


Esc. 1:200



EXPLORACIÓN 2b

Ladrillo militar 5 cm aprox.
Pañete de cal y arena de 2 cm.

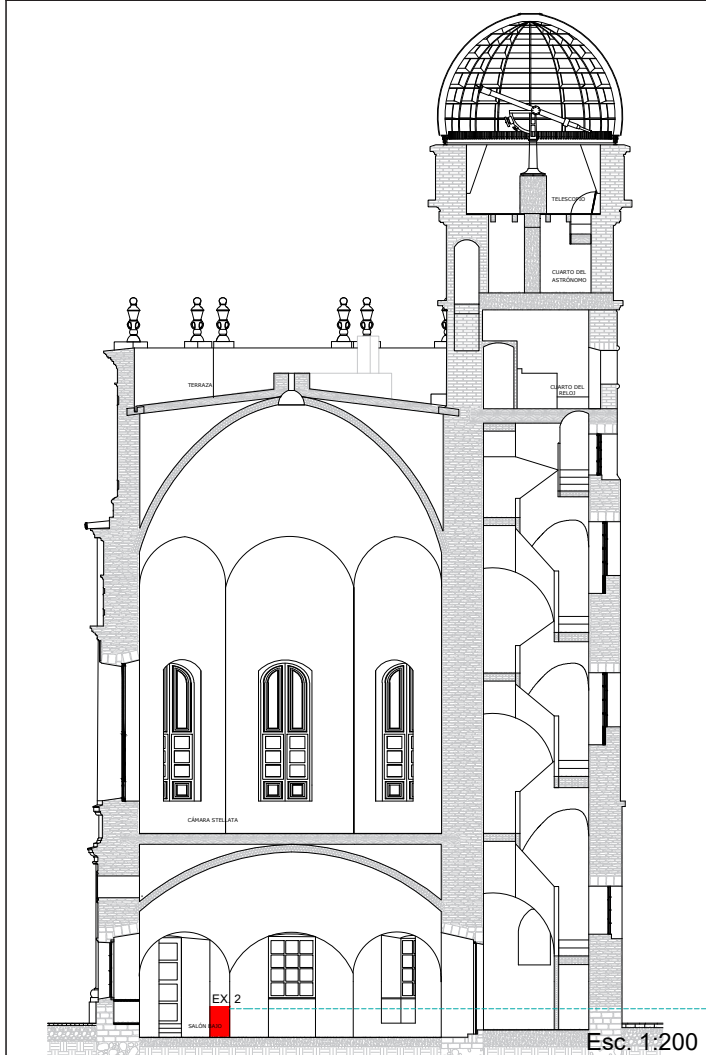


EXPLORACIÓN 2c

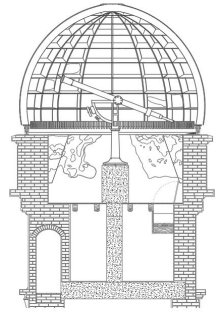
Ladrillo militar 5 cm aprox.
Pañete de cal y arena de 2 cm.

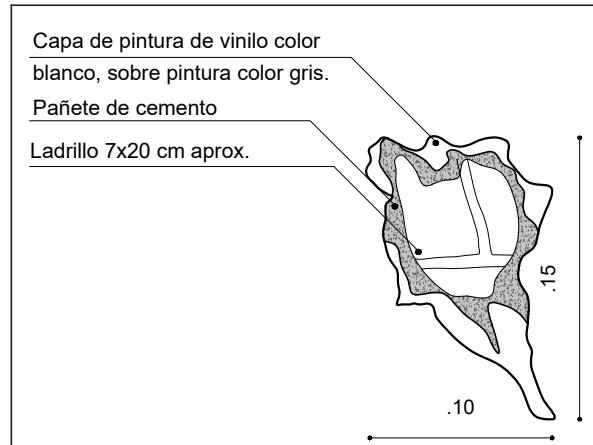
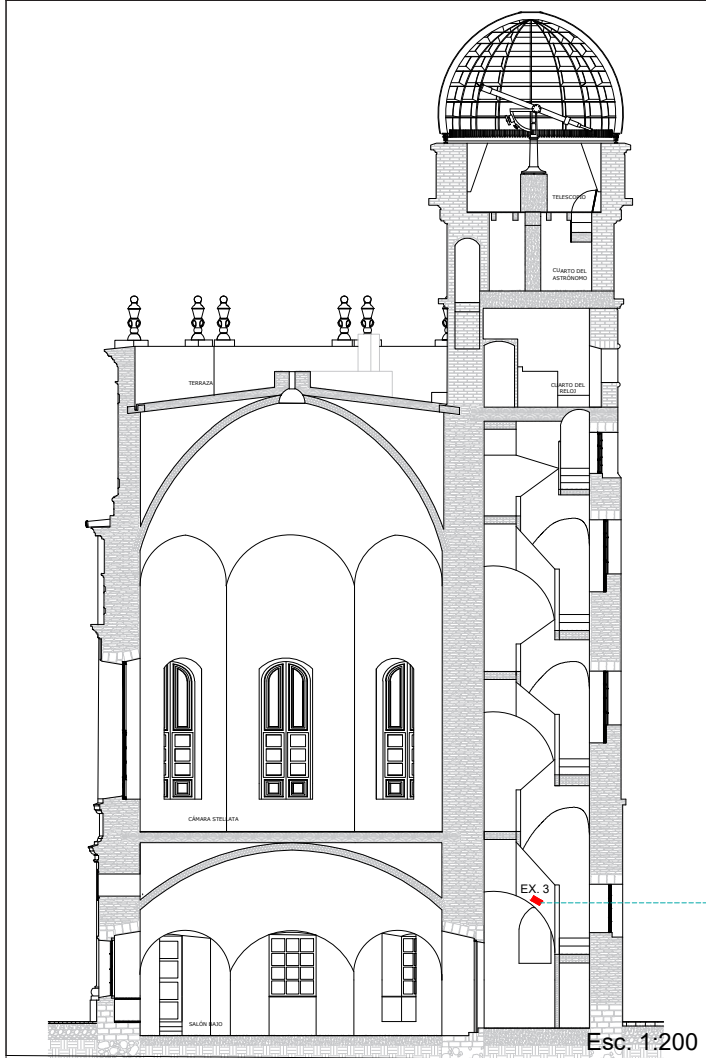
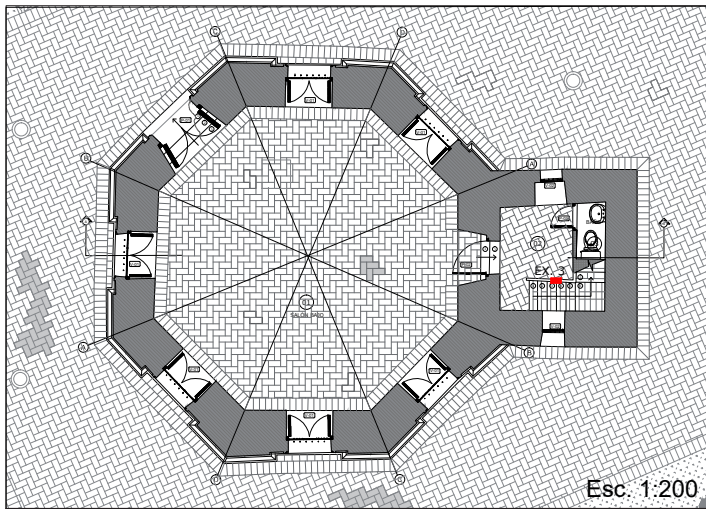


EXPLORACIÓN 2

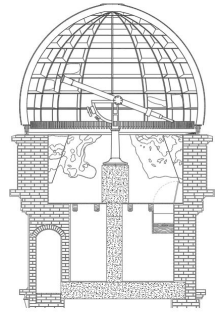


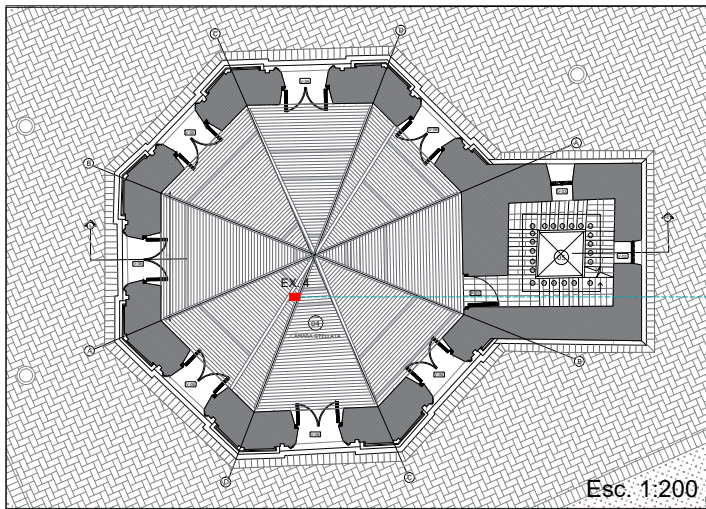
Esc. 1:200





EXPLORACIÓN 3
Pañete de cemento.

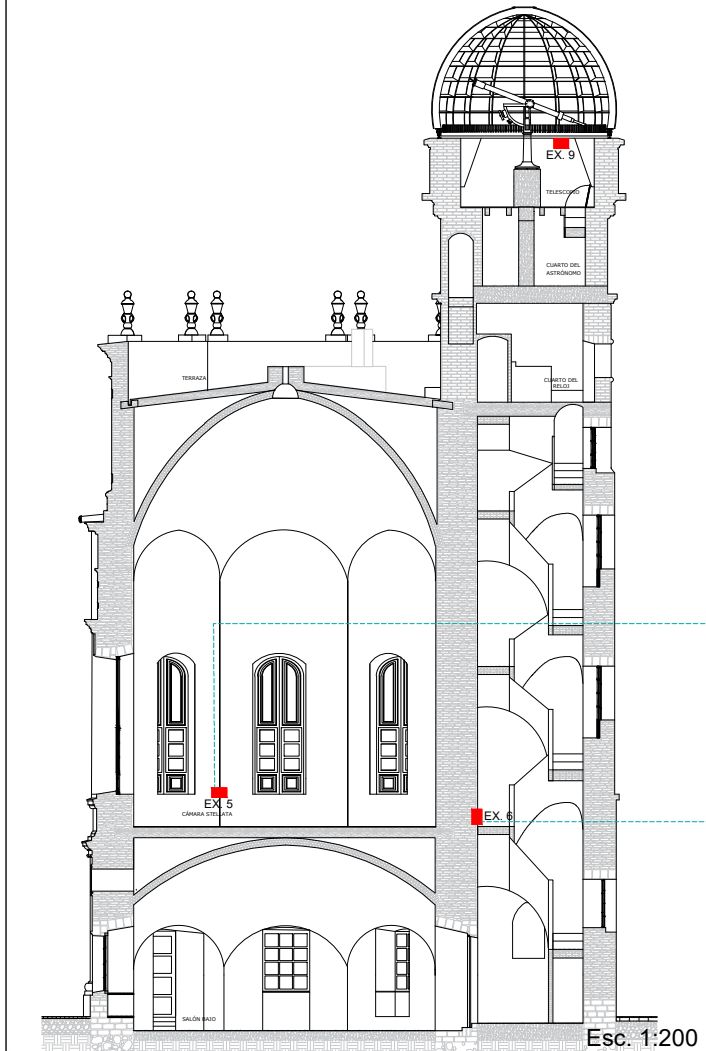
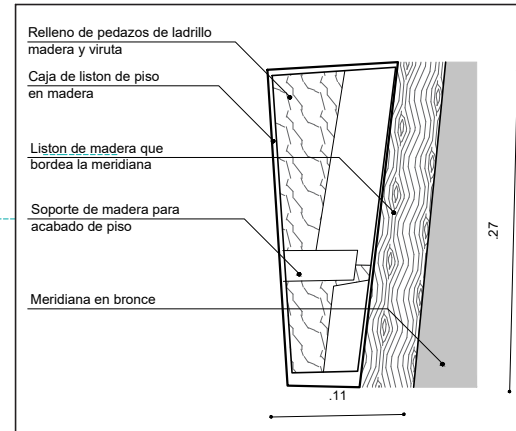




Esc. 1:200



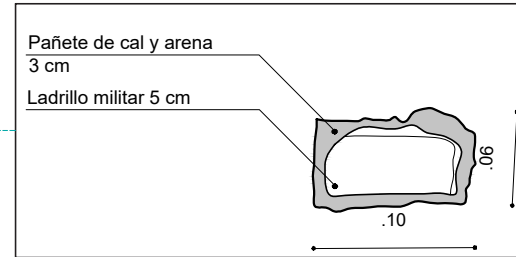
EXPLORACIÓN 4



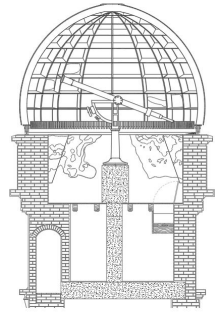
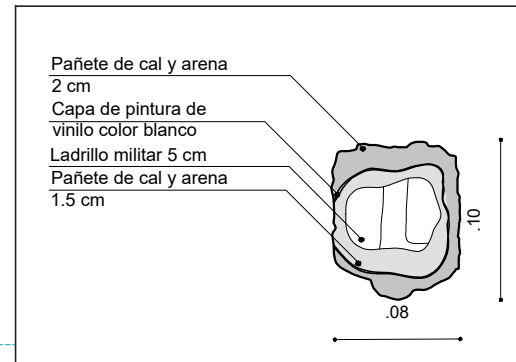
Esc. 1:200



EXPLORACIÓN 5
Ladrillo militar 5 cm aprox.
Pañete de cal y arena de 3 cm.



EXPLORACIÓN 6
Ladrillo militar 5 cm aprox.
Doble pañete de cal y arena de 3,5 cm
Primer pañete de 1,5 cm.
Segundo pañete de 2 cm..



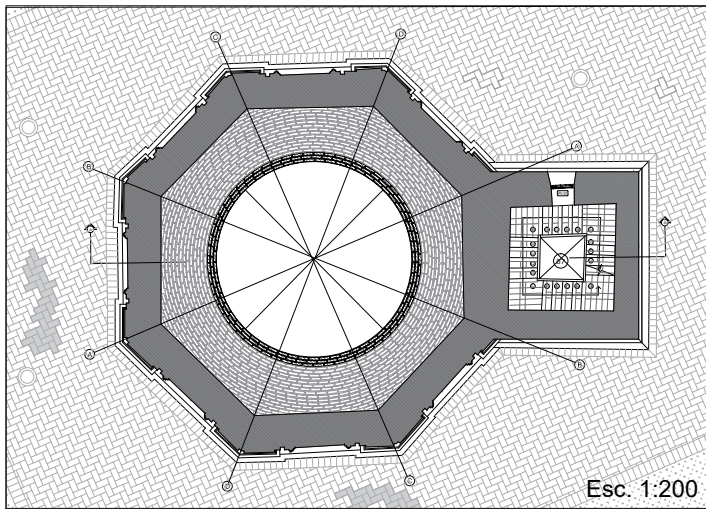
REALIZO:

OBSERVACIONES:

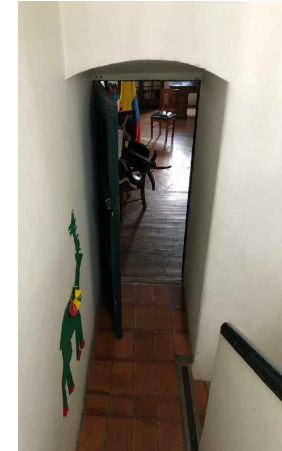
FECHA:

ESPACIO:

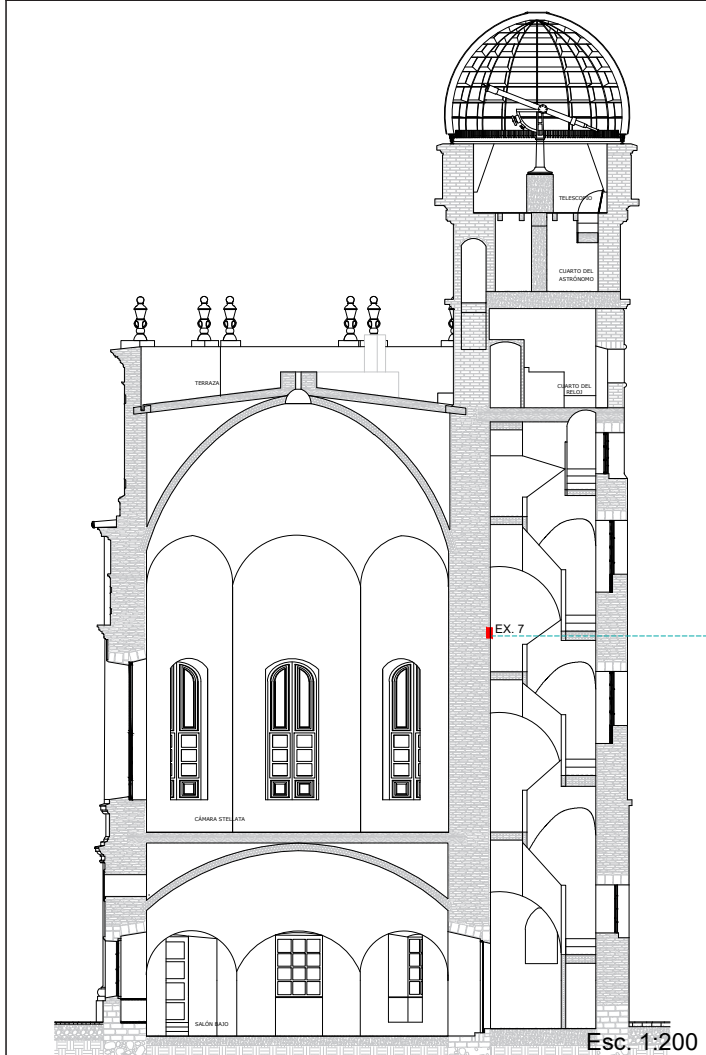
FICHA:



Esc. 1:200



Junta natural en vano tapiado.

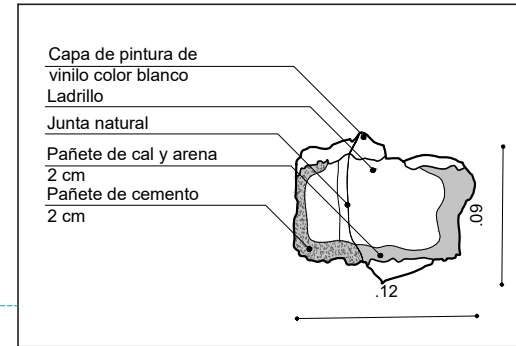


Esc. 1:200

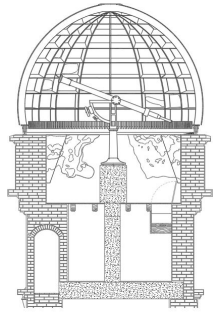


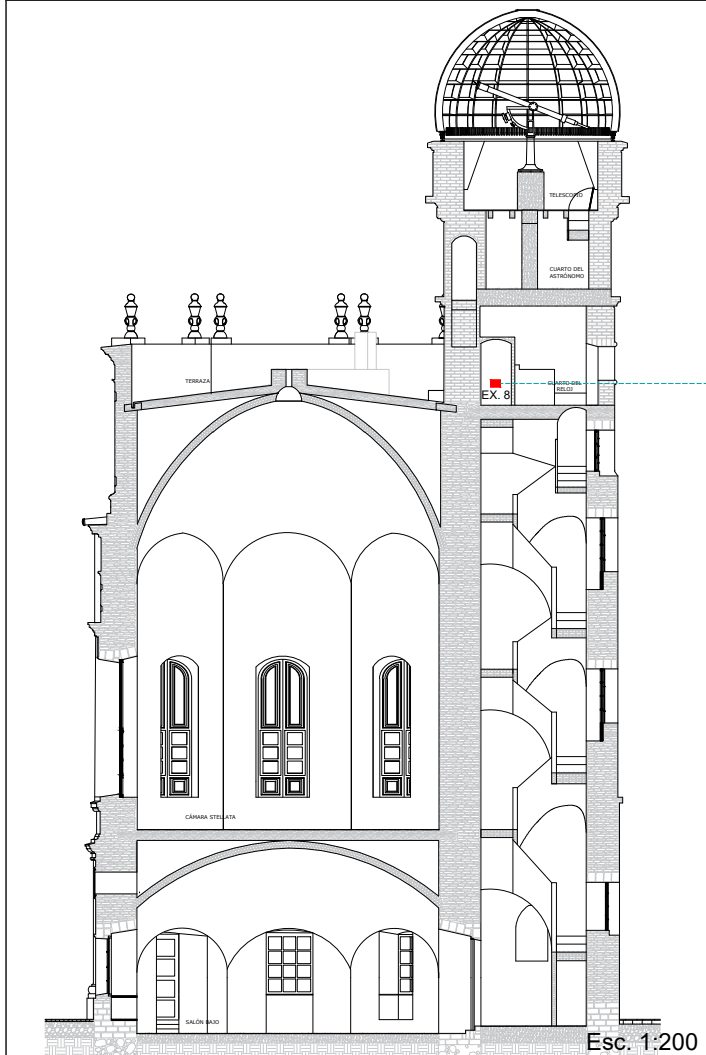
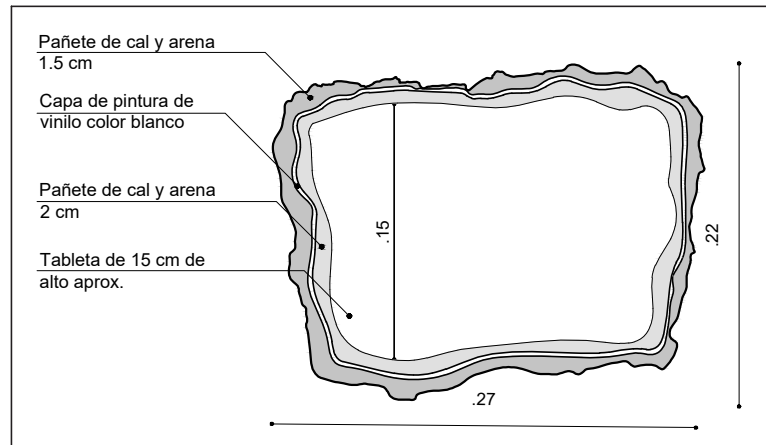
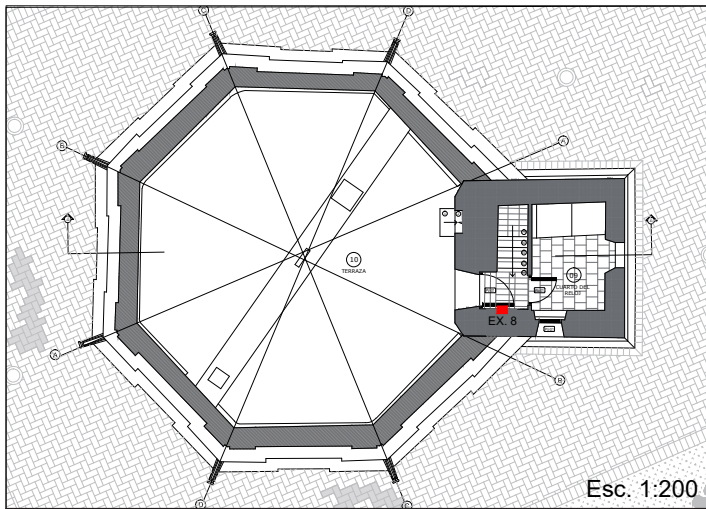
Pañete de cemento de 2 cm.

Pañete de cal y arena de 2 cm.

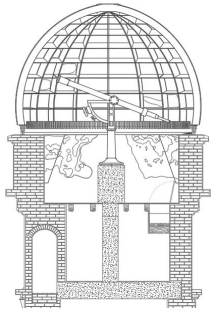


EXPLORACIÓN 7





EXPLORACIÓN 8
 Tableta de 15 cm de alto aprox.
 Doble pañete de cal y arena de 3,5 cm.
 Primer pañete de 1,5 cm.
 Segundo pañete de 2 cm.



REALIZO:

ARQ. LINA MARÍA
 REYES GÓMEZ

OBSERVACIONES:

FECHA:

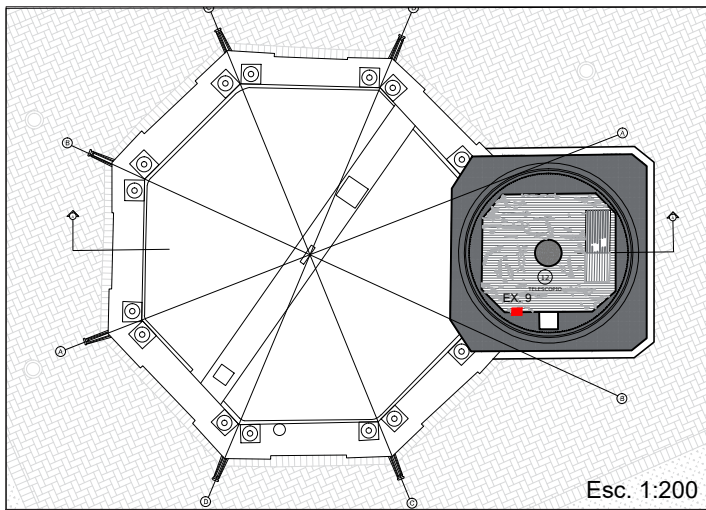
ENERO DE 2019

ESPACIO:

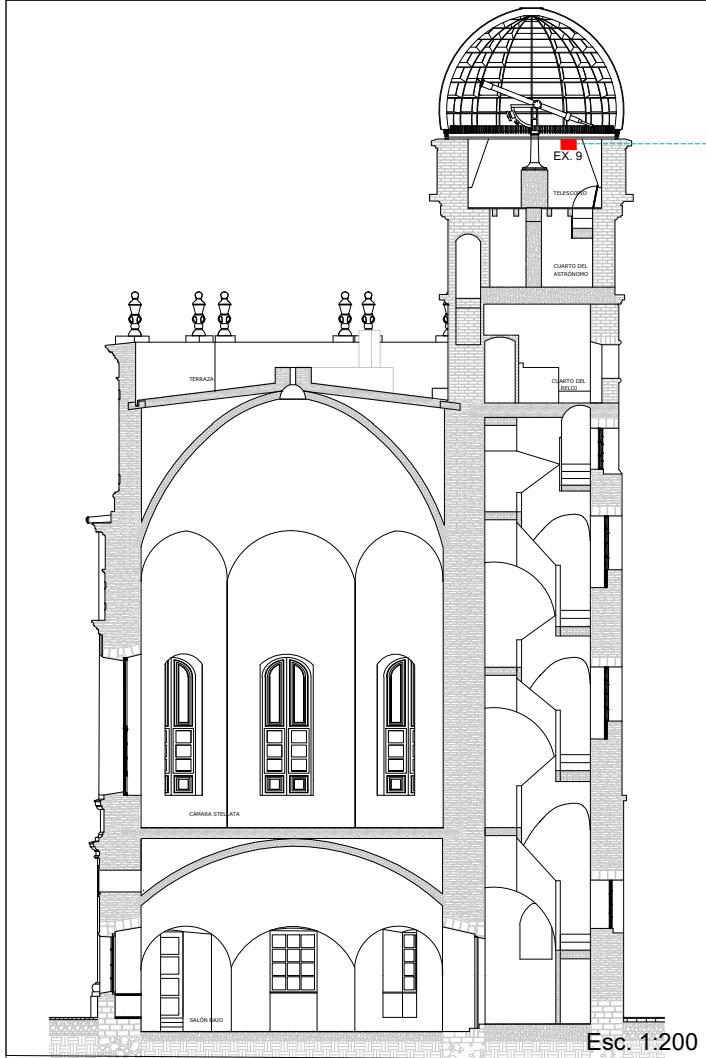
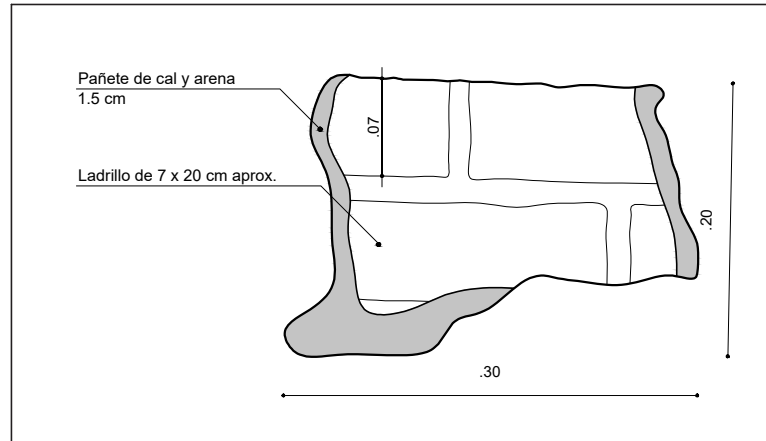
09

FICHA:

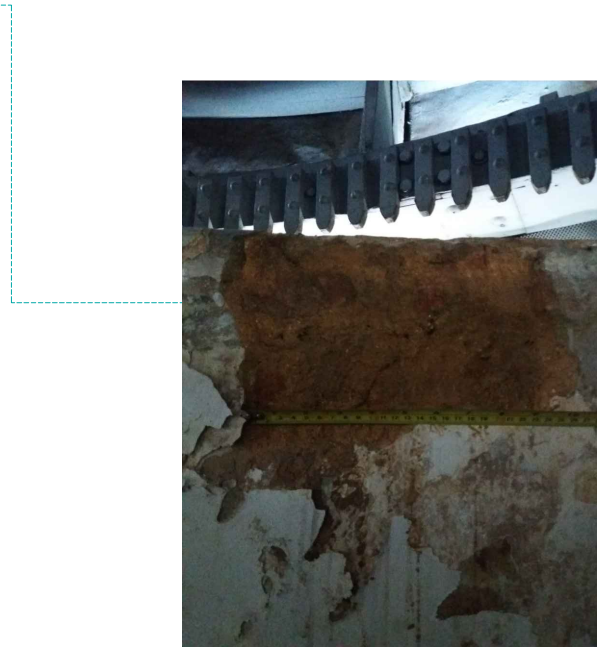
06



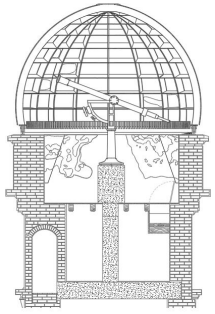
Esc. 1:200



Esc. 1:200



EXPLORACIÓN 9
Ladrillo de 7 x 20 cm a
Pañete de cal y arena de 1,5 cm.



PRIMERA PLANTA
EXPLORACIONES

REALIZO:

ARQ. LINA MARÍA
REYES GÓMEZ

OBSERVACIONES:

FECHA:

ENERO DE 2019

ESPACIO:

12

FICHA:

07