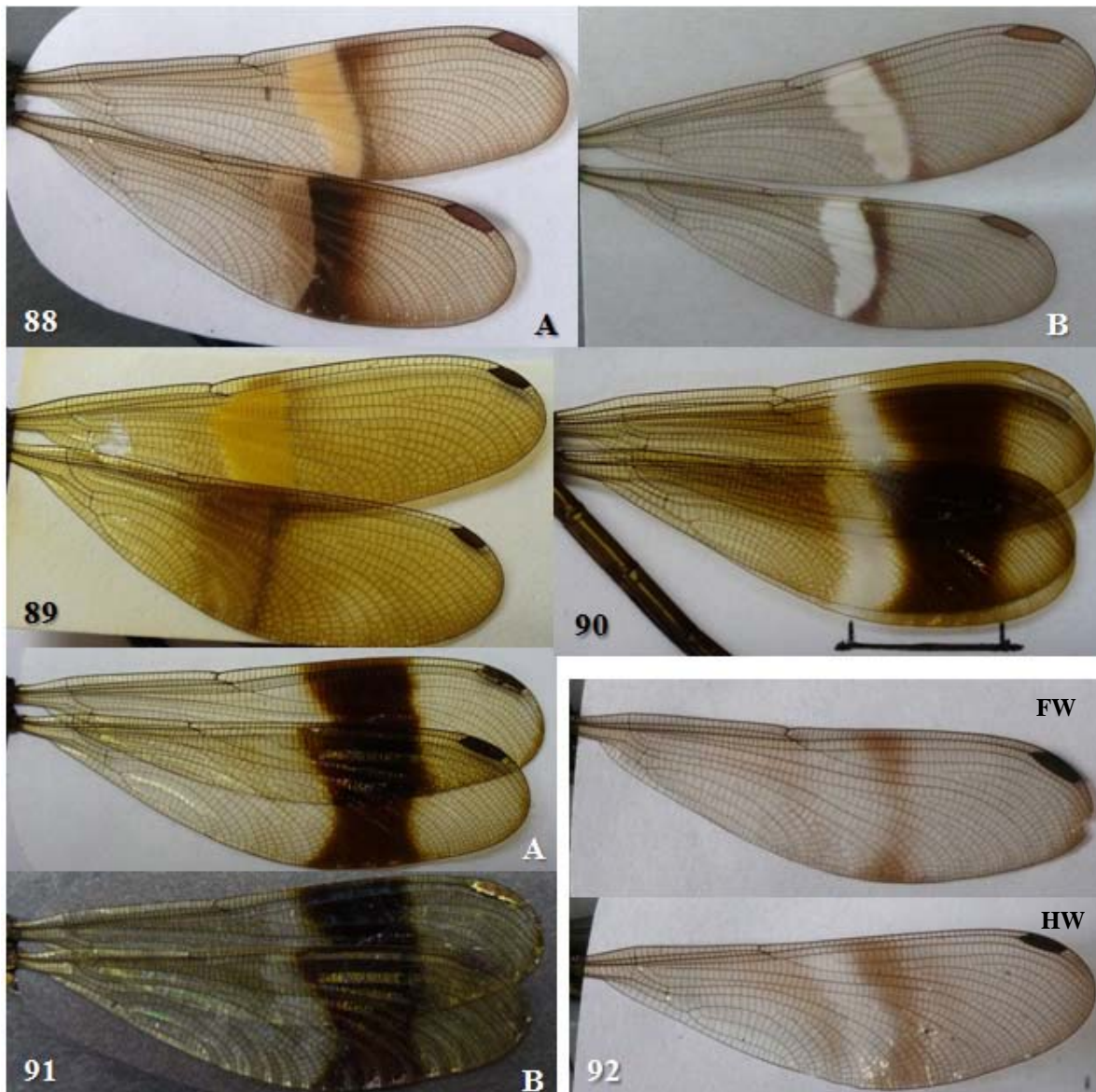


Figures 83-87. Female wings. (83) *P. aurora* (A) mature individual, (B) teneral individual; (84 A, B, C) *P. boliviana*; (85) *P. batesi*, the arrow indicates the nodal band (*nd*); (86) *P. concinna*; (87) *P. derivata*, gynochrome.



Figures 88-92. Females. (88) *P. manua* (A) mature individual, (B) teneral individual; (89) *P. mutata*; (90) *P. picta*; (91 A, B) *P. neopicta*, the white band is noted in B; (92) *P. procera*.

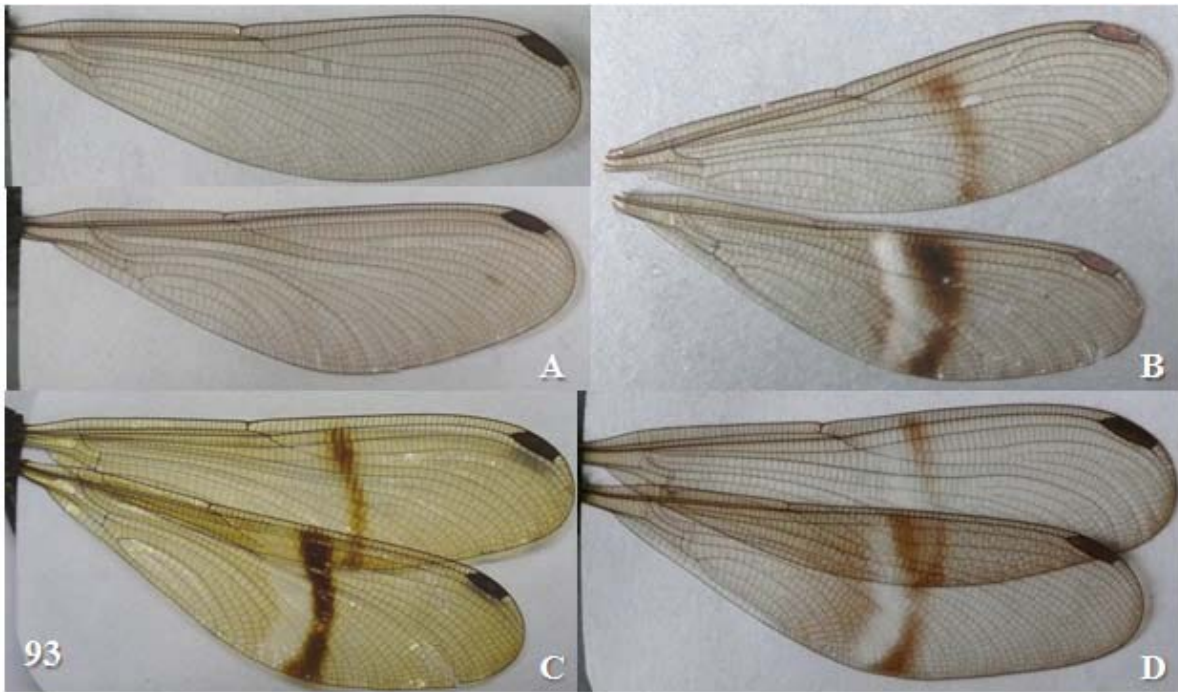


Figure 93. *Polythore ornata* female wings. (A) *montana* morph, (B, C, D) other gynochromes.



Figure 94-95. Female wings. (94) *Polythore spaeteri*, hind wing; (95) *P. terminata* gynochrome.

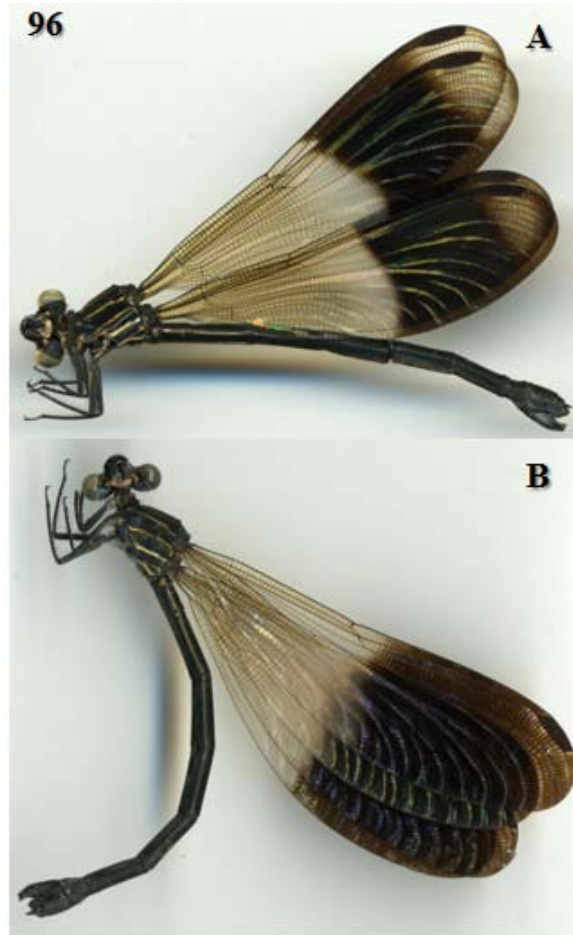


Figure 96. *Polythore procera* females (A) gynochrome, (B) androchrome.