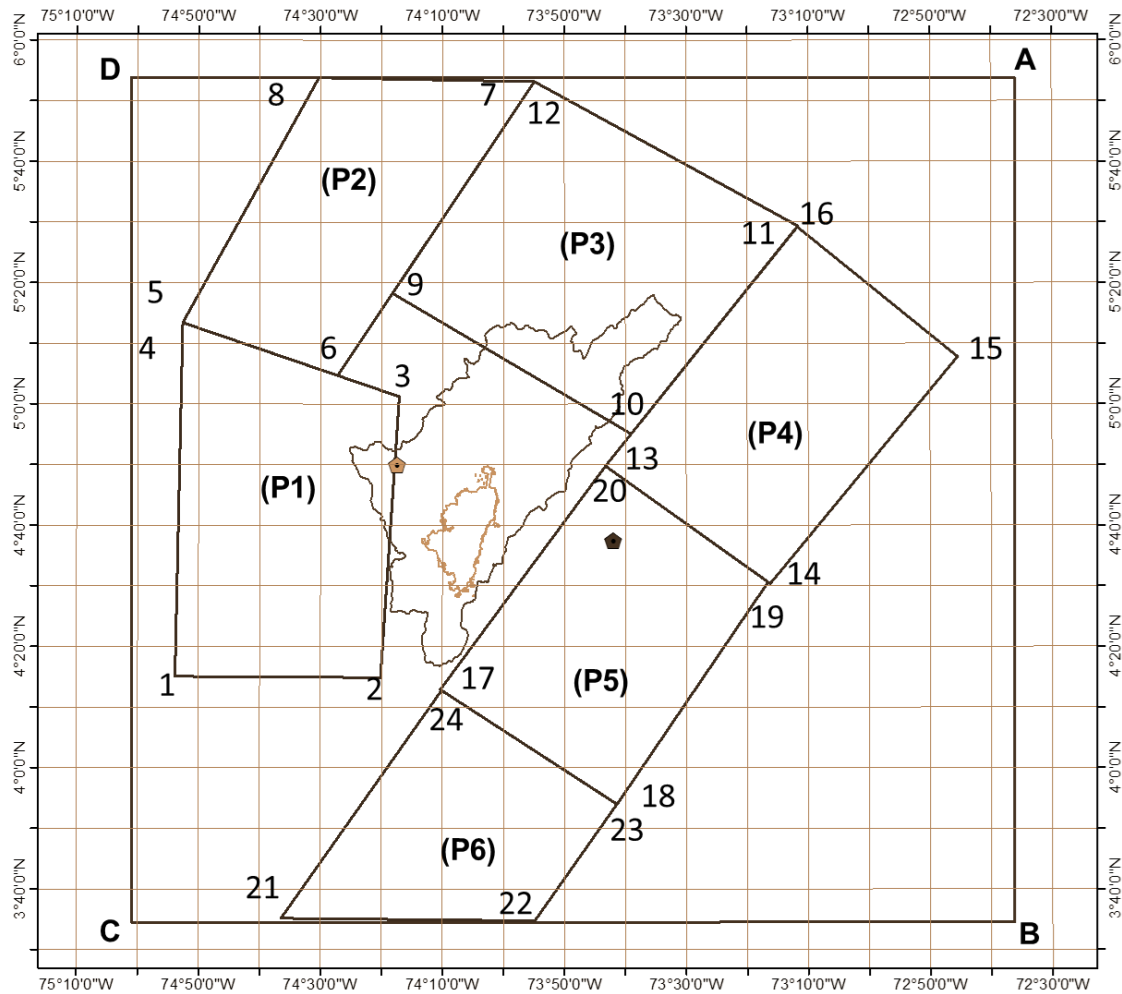


ANEXO A

Epicentros dentro del área de estudio
Catálogo RSNC (01/06/1993 y 30/04/2013).

Tabla 1: Coordenadas de vértices de los polígonos de análisis



Vértice	Norte	Oeste
1	4.256	74.899
2	4.251	74.340
3	5.022	74.291
4	5.222	74.879
5	5.222	74.879
6	5.080	74.463
7	5.898	74.513
8	5.891	73.918
9	5.305	74.304
10	4.923	73.656
11	5.292	74.193
12	5.898	74.513
13	4.923	73.656
14	5.491	73.201
15	4.513	73.278
16	5.292	74.193
17	4.214	74.172
18	3.906	73.694
19	5.491	73.201
20	4.923	73.656
21	3.587	73.915
22	3.592	74.613
23	3.906	73.694
24	4.214	74.172

Tabla 2: Sismos seleccionados dentro del área de estudio.

Fecha	M _L	Long	Lat.	Prof (km)										
6/7/1993	4.60	-74.63	4.82	21.20	2/13/1994	3.10	-74.42	5.87	7.20	2/6/1995	4.30	-73.01	4.88	0.00
6/15/1993	3.40	-72.65	5.24	8.00	3/29/1994	3.60	-74.44	5.69	22.90	2/6/1995	3.10	-73.02	5.11	3.40
6/15/1993	4.70	-72.67	5.25	8.00	5/30/1994	3.00	-74.63	4.82	14.00	2/10/1995	3.30	-72.95	4.97	3.80
7/9/1993	3.90	-72.67	5.29	4.00	7/24/1994	3.00	-73.70	4.49	0.00	2/12/1995	3.00	-73.97	3.79	0.50
8/5/1993	3.00	-72.97	5.72	3.40	7/26/1994	3.40	-74.62	4.75	16.80	2/24/1995	4.20	-73.90	3.73	0.90
8/7/1993	3.30	-74.22	3.75	3.10	7/31/1994	4.00	-73.61	4.51	0.00	3/1/1995	3.70	-72.93	5.12	0.00
8/29/1993	3.30	-72.90	5.70	2.00	7/31/1994	3.20	-74.41	5.64	32.30	3/4/1995	4.00	-72.84	5.09	0.00
9/15/1993	3.30	-74.06	5.61	124.00	8/2/1994	3.70	-73.77	4.68	0.00	3/5/1995	4.10	-74.82	4.39	83.60
9/18/1993	3.70	-72.78	5.68	0.00	8/29/1994	3.00	-74.49	5.60	5.90	3/5/1995	3.40	-72.99	5.13	0.70
9/25/1993	3.00	-74.37	3.64	0.10	9/27/1994	3.70	-74.18	3.67	5.20	3/5/1995	3.10	-73.28	5.34	0.00
9/29/1993	3.60	-74.51	5.56	4.00	10/12/1994	3.30	-74.01	5.63	120.00	3/11/1995	3.10	-74.01	3.75	1.00
10/18/1993	3.60	-72.67	5.31	0.00	10/28/1994	3.90	-74.68	4.77	0.00	3/13/1995	3.60	-74.28	5.58	66.50
10/26/1993	3.30	-74.68	4.73	6.00	10/31/1994	3.00	-74.77	5.21	3.60	3/26/1995	3.50	-72.86	5.04	3.60
10/28/1993	4.00	-74.11	3.78	0.00	12/2/1994	3.90	-74.73	5.11	2.00	3/31/1995	3.30	-72.98	5.02	0.00
11/3/1993	3.30	-73.50	5.50	160.50	12/17/1994	3.10	-74.32	5.78	7.80	4/5/1995	3.30	-74.43	3.67	0.00
12/2/1993	3.10	-72.66	5.44	0.00	1/19/1995	6.60	-72.95	5.03	0.00	4/6/1995	5.10	-72.90	5.12	0.00
12/5/1993	3.00	-73.99	5.63	110.00	1/21/1995	5.60	-73.13	5.02	1.00	4/7/1995	3.10	-72.86	5.11	0.00
12/6/1993	3.00	-74.60	4.70	3.00	1/22/1995	6.00	-72.91	5.08	0.00	4/20/1995	3.20	-72.94	5.06	0.00
12/10/1993	3.80	-74.69	5.24	3.00	1/22/1995	4.20	-72.92	5.13	0.00	4/21/1995	3.40	-73.03	5.13	0.00
12/16/1993	3.00	-74.18	3.62	0.00	1/22/1995	3.10	-74.67	5.15	17.80	4/28/1995	3.40	-73.01	5.13	0.00
12/27/1993	4.10	-74.28	3.72	0.00	1/22/1995	4.20	-72.89	5.18	0.00	5/3/1995	3.30	-74.64	4.54	0.60
12/27/1993	3.30	-73.28	4.85	0.00	1/23/1995	3.80	-72.94	5.04	1.00	5/9/1995	3.00	-74.16	4.02	0.00
1/24/1994	3.90	-74.39	5.84	2.90	1/24/1995	3.30	-73.02	4.92	0.00	5/10/1995	3.10	-73.01	5.16	0.10
1/27/1994	3.30	-74.41	5.88	0.40	1/25/1995	3.10	-72.90	5.01	4.00	5/14/1995	3.40	-73.03	5.14	0.00
2/9/1994	3.10	-73.59	5.47	145.00	1/25/1995	3.20	-72.85	5.08	0.70	5/20/1995	5.70	-73.88	5.59	137.70
2/9/1994	4.00	-74.36	5.62	97.00	1/27/1995	3.30	-72.99	5.05	3.90	6/1/1995	3.50	-72.90	5.13	0.00
					1/28/1995	5.10	-73.68	5.52	1.00	6/4/1995	3.00	-74.60	4.87	14.10

6/4/1995	4.60	-74.61	4.91	22.00
6/4/1995	3.20	-74.62	4.92	17.50
6/4/1995	3.00	-74.21	5.73	0.00
6/8/1995	3.00	-72.96	5.18	0.00
6/9/1995	3.70	-74.00	4.35	0.00
6/17/1995	4.00	-72.98	5.16	0.00
6/18/1995	4.40	-73.00	5.18	0.00
7/9/1995	3.10	-74.46	5.54	17.70
7/14/1995	3.00	-74.73	4.73	46.60
7/15/1995	3.20	-73.94	4.15	0.00
7/18/1995	4.70	-72.97	5.20	0.10
7/22/1995	3.40	-72.91	5.06	0.00
7/25/1995	3.30	-72.94	5.16	0.00
7/29/1995	3.80	-72.99	5.15	0.00
7/31/1995	4.20	-73.87	5.60	135.70
8/4/1995	3.10	-74.33	5.65	9.90
8/9/1995	3.80	-74.09	5.66	120.00
8/21/1995	3.20	-74.57	4.87	6.00
8/24/1995	3.50	-74.61	4.96	14.70
9/1/1995	3.20	-74.62	4.79	0.10
9/3/1995	3.20	-74.65	5.04	2.50
9/5/1995	3.00	-74.39	5.69	25.60
9/7/1995	3.70	-74.78	4.68	5.00
9/15/1995	3.30	-74.80	5.25	19.40
9/26/1995	3.00	-74.73	5.05	13.50
9/28/1995	4.30	-74.19	4.04	0.00
10/9/1995	3.30	-74.78	4.83	53.20
10/10/1995	3.20	-72.92	5.01	0.00
10/21/1995	3.00	-74.69	4.74	2.80

11/9/1995	3.20	-74.48	3.68	0.00
11/15/1995	3.10	-74.39	5.68	25.00
11/18/1995	3.00	-73.58	5.83	120.00
11/30/1995	3.00	-73.02	5.13	0.90
12/9/1995	3.20	-73.89	5.49	150.00
12/25/1995	3.30	-74.01	5.69	106.00
12/28/1995	3.00	-74.67	4.91	21.80
12/30/1995	4.50	-74.18	4.03	0.00
1/3/1996	3.60	-73.15	4.94	7.80
1/20/1996	3.80	-72.69	5.59	0.00
2/15/1996	3.60	-74.66	4.70	10.10
3/2/1996	4.00	-74.69	4.71	11.10
3/10/1996	3.10	-74.74	4.74	1.10
3/14/1996	4.20	-73.06	5.13	4.00
3/15/1996	3.40	-73.62	5.86	140.00
3/29/1996	3.00	-74.02	5.73	105.70
4/12/1996	3.80	-72.96	4.91	0.00
4/14/1996	3.60	-73.89	5.60	146.20
4/24/1996	3.30	-72.86	5.03	0.00
5/6/1996	3.30	-74.38	4.45	23.60
5/28/1996	3.40	-74.68	4.71	2.00
5/30/1996	3.10	-74.17	4.10	0.00
6/1/1996	3.50	-74.43	3.63	7.70
6/9/1996	3.00	-74.59	5.61	3.80
6/21/1996	3.00	-73.91	3.74	0.00
6/27/1996	3.70	-74.37	5.62	88.00
7/13/1996	3.40	-73.55	5.56	150.00
7/21/1996	3.50	-74.21	3.62	0.00
8/24/1996	3.10	-73.04	5.22	4.00

9/20/1996	3.20	-72.90	5.04	3.50
10/17/1996	3.00	-73.02	4.92	0.00
10/18/1996	3.00	-74.04	5.57	107.80
11/26/1996	3.10	-73.76	5.27	147.70
12/6/1996	3.50	-74.12	5.24	120.50
12/23/1996	4.10	-74.34	3.59	0.00
12/23/1996	3.90	-74.37	3.61	0.00
12/23/1996	3.90	-72.71	5.58	0.00
1/2/1997	3.00	-72.91	5.04	2.40
1/15/1997	3.10	-74.88	4.77	7.80
1/24/1997	3.10	-74.27	3.89	4.00
1/24/1997	3.30	-74.17	3.99	6.00
2/1/1997	3.30	-74.44	5.19	50.50
2/8/1997	3.00	-73.33	5.77	125.70
2/17/1997	4.10	-73.59	4.41	17.80
3/4/1997	3.00	-74.05	5.69	127.10
3/10/1997	3.60	-72.89	5.14	0.00
3/10/1997	3.30	-72.79	5.14	0.00
3/30/1997	4.20	-74.02	5.61	116.00
5/11/1997	4.70	-72.64	5.51	16.40
5/29/1997	3.00	-74.36	5.58	7.90
6/6/1997	3.30	-74.76	4.48	14.40
6/7/1997	3.30	-74.39	5.63	80.00
6/25/1997	3.00	-74.39	3.67	6.50
7/17/1997	5.10	-74.11	3.82	0.00
7/17/1997	3.90	-74.06	3.85	0.00
7/30/1997	3.60	-72.89	5.12	2.90
8/15/1997	3.10	-74.02	5.64	104.80
8/19/1997	3.10	-73.88	4.17	4.00

9/18/1997	3.00	-73.51	5.61	158.60
9/25/1997	3.20	-74.30	5.78	64.80
9/26/1997	3.00	-72.99	5.27	3.70
10/15/1997	3.70	-74.35	5.77	95.70
10/16/1997	3.00	-74.31	5.66	83.40
10/31/1997	3.00	-73.97	5.62	120.40
11/9/1997	3.10	-73.04	5.13	0.00
1/7/1998	3.20	-73.29	5.65	0.00
1/27/1998	3.00	-73.18	4.98	0.00
2/2/1998	4.30	-74.56	4.94	40.00
2/3/1998	3.50	-74.57	4.97	4.00
2/9/1998	3.10	-74.28	3.73	0.00
2/9/1998	3.20	-73.58	4.38	16.00
2/10/1998	4.80	-73.03	5.17	0.10
2/13/1998	3.10	-73.61	5.71	153.00
2/17/1998	3.10	-74.66	5.40	0.00
4/15/1998	3.10	-73.13	4.78	21.80
5/8/1998	3.60	-74.06	4.00	0.00
5/24/1998	3.80	-73.09	5.14	0.00
5/27/1998	3.30	-72.63	5.48	41.70
5/28/1998	3.40	-74.40	5.42	6.00
5/30/1998	3.90	-74.39	5.40	200.00
6/14/1998	3.60	-74.30	5.78	54.00
6/17/1998	3.00	-73.50	4.65	0.00
6/22/1998	3.30	-73.83	5.62	116.00
6/23/1998	3.10	-74.26	3.66	0.00
6/23/1998	3.00	-74.61	4.65	6.00
6/25/1998	3.70	-73.06	5.10	0.00
6/25/1998	3.80	-73.05	5.10	4.00

6/27/1998	3.70	-74.04	3.66	0.00
6/27/1998	3.20	-73.75	5.27	150.60
8/3/1998	3.20	-72.99	4.92	0.00
8/8/1998	3.20	-74.37	5.43	2.00
8/17/1998	3.00	-73.71	5.27	148.60
8/27/1998	3.30	-74.02	5.55	140.00
8/27/1998	3.40	-73.95	5.57	120.00
9/9/1998	3.00	-73.79	5.70	120.00
9/26/1998	3.20	-72.90	5.06	0.10
10/25/1998	3.40	-74.71	5.39	3.50
10/29/1998	3.10	-73.71	5.31	143.60
12/13/1998	3.40	-74.30	3.66	2.30
2/12/1999	3.50	-73.85	4.15	0.00
2/22/1999	3.10	-74.33	5.72	74.00
3/16/1999	3.40	-72.76	5.74	2.00
5/15/1999	4.80	-74.76	4.67	18.70
5/20/1999	3.20	-72.96	5.11	0.00
5/23/1999	3.60	-73.76	5.26	160.00
6/1/1999	5.20	-73.75	4.29	0.60
6/1/1999	3.00	-73.76	4.33	1.00
6/10/1999	4.80	-73.76	4.31	4.00
6/11/1999	4.10	-74.70	4.73	0.30
6/15/1999	3.10	-73.54	5.57	0.00
6/15/1999	3.40	-73.57	5.58	0.00
6/18/1999	3.20	-74.07	5.53	120.00
6/20/1999	3.20	-74.19	5.84	0.00
6/25/1999	3.30	-73.00	5.17	0.00
7/1/1999	3.30	-73.86	5.46	127.50
7/11/1999	3.20	-74.70	4.69	0.10

7/13/1999	3.10	-72.86	5.70	0.00
7/16/1999	3.80	-74.70	4.69	1.10
8/3/1999	3.20	-72.65	5.28	14.20
8/20/1999	3.10	-73.06	5.18	0.00
8/23/1999	3.20	-74.32	3.69	0.00
8/25/1999	4.00	-74.66	4.96	11.60
8/25/1999	3.50	-74.10	5.38	120.40
9/4/1999	3.10	-74.72	4.71	7.10
9/20/1999	4.20	-73.28	4.76	7.40
10/9/1999	3.20	-74.59	5.52	12.10
10/9/1999	4.30	-74.55	5.54	10.20
10/19/1999	3.10	-73.75	4.33	3.70
10/30/1999	4.20	-73.05	5.19	4.00
11/11/1999	3.90	-72.66	5.60	3.80
11/13/1999	3.80	-73.02	5.18	4.00
11/15/1999	4.10	-72.98	5.17	0.00
12/2/1999	3.00	-74.77	5.26	6.00
12/3/1999	3.80	-74.69	4.74	3.90
12/10/1999	3.50	-72.96	5.02	0.00
12/16/1999	3.20	-72.71	5.47	17.10
1/27/2000	3.10	-72.85	5.53	3.90
3/5/2000	3.20	-72.75	5.33	2.00
3/5/2000	3.00	-73.95	5.63	120.00
3/11/2000	3.10	-73.69	5.63	137.00
3/29/2000	3.50	-74.63	4.79	20.20
3/29/2000	4.30	-74.18	5.81	110.00
4/6/2000	3.20	-74.10	5.50	98.90
4/9/2000	4.30	-72.74	5.39	14.70
4/27/2000	3.00	-74.00	5.82	5.50

4/28/2000	3.30	-73.85	4.29	0.00
4/29/2000	3.30	-73.73	5.28	145.80
5/8/2000	3.30	-73.66	5.25	67.30
5/9/2000	3.00	-73.71	5.09	77.80
5/11/2000	3.00	-72.93	5.18	3.60
5/21/2000	4.80	-72.97	5.03	1.50
5/24/2000	4.40	-74.66	4.72	1.20
5/24/2000	3.10	-73.49	5.57	150.00
5/31/2000	3.80	-73.71	4.22	1.30
6/24/2000	3.80	-72.76	5.61	2.50
7/30/2000	4.80	-73.72	5.57	156.40
8/6/2000	3.40	-73.95	5.73	120.00
8/12/2000	3.00	-74.43	5.83	17.10
8/13/2000	3.10	-72.98	5.65	5.20
8/15/2000	3.10	-74.28	3.71	0.70
8/19/2000	4.00	-72.98	5.18	1.30
8/28/2000	4.10	-74.88	4.67	0.80
8/30/2000	3.30	-73.20	4.88	5.70
9/3/2000	3.00	-74.60	5.49	2.20
9/7/2000	3.60	-74.63	4.82	15.40
9/16/2000	4.90	-73.57	5.66	170.00
9/17/2000	3.80	-74.12	3.61	1.80
9/17/2000	3.60	-74.33	5.60	21.80
10/10/2000	3.30	-72.91	5.24	0.00
10/10/2000	3.20	-73.08	5.29	1.20
11/3/2000	3.70	-74.41	3.67	0.60
11/5/2000	3.50	-74.42	5.60	10.70
11/18/2000	3.00	-74.69	4.53	39.70
12/13/2000	3.20	-73.73	5.17	170.00

12/22/2000	3.00	-74.73	3.89	2.90
12/27/2000	3.20	-73.82	4.41	0.50
12/29/2000	3.40	-73.73	5.61	130.00
1/1/2001	3.00	-73.85	4.24	0.00
1/25/2001	3.00	-74.14	5.76	118.00
2/6/2001	3.00	-74.44	4.48	6.80
2/19/2001	3.00	-73.72	5.29	120.90
2/21/2001	3.10	-73.86	4.11	0.00
3/10/2001	3.30	-73.26	4.74	0.30
4/19/2001	3.20	-74.50	5.79	18.60
5/9/2001	3.20	-73.86	5.58	136.00
5/17/2001	3.90	-74.32	3.63	0.00
8/18/2001	3.10	-72.94	5.24	0.20
9/17/2001	3.00	-72.94	5.07	0.40
9/24/2001	3.00	-73.88	5.55	136.00
10/5/2001	3.00	-73.98	5.30	136.90
11/29/2001	3.20	-73.35	4.84	0.00
12/2/2001	3.00	-73.34	4.84	0.00
12/24/2001	3.00	-73.92	5.49	146.40
1/11/2002	3.10	-74.50	5.54	4.80
1/23/2002	3.60	-74.70	4.74	2.00
2/8/2002	3.50	-74.71	4.82	14.10
2/16/2002	4.20	-73.94	3.64	1.60
2/27/2002	3.60	-74.55	4.82	0.00
2/27/2002	3.40	-74.54	4.83	0.00
3/7/2002	3.50	-74.37	5.58	95.60
3/18/2002	3.70	-72.67	5.67	0.10
3/29/2002	3.00	-73.73	5.29	150.00
4/1/2002	3.00	-73.06	5.06	0.00

5/4/2002	3.90	-73.61	5.50	155.60
6/30/2002	3.00	-74.00	5.68	101.70
7/24/2002	4.70	-74.73	4.69	0.00
7/24/2002	4.70	-74.73	4.70	0.00
8/21/2002	3.00	-72.77	5.31	0.80
8/31/2002	3.80	-73.19	4.86	0.00
9/3/2002	3.40	-74.66	4.68	12.80
9/23/2002	3.20	-73.97	5.67	111.70
9/28/2002	3.70	-73.99	5.69	117.50
10/23/2002	4.30	-72.63	5.54	19.30
10/30/2002	3.50	-74.68	4.76	4.00
11/23/2002	3.40	-74.75	5.07	2.80
12/3/2002	3.60	-74.70	4.74	2.00
12/3/2002	3.10	-73.09	4.81	12.90
12/5/2002	3.00	-73.00	5.12	0.00
12/17/2002	3.40	-74.66	4.83	2.00
12/24/2002	3.30	-74.52	4.78	0.00
1/8/2003	4.30	-74.02	5.53	121.30
1/20/2003	3.60	-74.75	5.05	3.60
1/20/2003	3.20	-74.27	5.40	8.80
1/25/2003	3.00	-73.82	5.53	137.40
1/27/2003	3.00	-74.21	3.59	0.00
2/6/2003	3.00	-73.40	4.70	0.00
3/2/2003	4.10	-72.97	5.18	0.40
3/30/2003	3.30	-73.98	3.99	0.00
4/20/2003	3.20	-74.84	4.75	0.00
4/22/2003	3.50	-72.90	5.76	0.00
5/8/2003	3.20	-72.88	5.03	0.10
5/17/2003	3.10	-74.80	4.73	0.10

5/23/2003	4.20	-73.73	5.56	146.10
6/27/2003	3.00	-73.40	4.40	0.00
7/6/2003	3.40	-74.40	3.61	4.00
7/17/2003	3.60	-74.71	4.72	0.00
7/22/2003	3.00	-74.70	4.89	17.80
7/26/2003	3.60	-72.94	5.75	0.00
7/30/2003	3.40	-74.79	5.05	0.80
7/31/2003	3.10	-73.94	5.61	123.30
8/8/2003	3.30	-73.83	5.57	134.10
8/9/2003	3.00	-72.93	5.09	0.00
8/13/2003	3.60	-72.94	4.93	13.10
8/19/2003	3.50	-74.36	3.59	0.00
9/20/2003	3.50	-74.82	5.11	0.00
10/17/2003	3.40	-73.02	5.11	0.00
10/28/2003	4.00	-72.64	5.55	0.00
11/22/2003	3.20	-72.95	5.15	0.00
12/6/2003	3.00	-72.91	5.18	0.00
12/20/2003	3.80	-74.55	5.22	2.20
12/29/2003	3.60	-73.12	5.05	0.00
1/16/2004	3.30	-73.95	3.65	0.00
1/23/2004	3.40	-73.80	5.60	146.00
3/15/2004	3.10	-73.92	5.73	120.90
4/4/2004	3.20	-73.85	4.35	4.00
4/22/2004	3.30	-74.10	3.81	0.00
5/6/2004	3.50	-73.49	5.50	2.00
6/24/2004	3.20	-74.81	4.69	21.70
6/25/2004	3.10	-72.81	5.58	0.00
6/26/2004	4.10	-74.21	3.70	0.10
7/16/2004	3.20	-73.09	4.82	0.40

8/14/2004	3.40	-74.59	4.65	23.40
8/14/2004	3.30	-74.81	4.66	22.80
8/21/2004	3.10	-73.46	4.52	21.90
9/28/2004	3.30	-74.71	5.55	4.00
11/9/2004	3.50	-73.75	5.28	150.00
12/19/2004	3.50	-74.05	5.65	119.10
12/23/2004	3.10	-73.34	4.84	0.00
1/27/2005	3.10	-74.41	5.63	100.20
2/18/2005	4.20	-73.72	5.28	152.40
3/28/2005	3.40	-73.99	5.63	114.40
4/1/2005	3.50	-73.59	4.43	2.00
4/23/2005	3.10	-74.85	4.84	4.00
5/5/2005	3.60	-73.75	5.32	150.00
5/6/2005	3.10	-73.75	5.31	146.40
5/30/2005	3.00	-74.39	5.63	88.00
6/9/2005	3.20	-74.64	5.19	26.20
6/12/2005	3.00	-73.72	5.27	154.50
6/25/2005	3.10	-74.33	5.71	18.00
7/8/2005	3.00	-73.79	5.33	149.80
7/25/2005	3.00	-72.99	5.69	4.00
7/29/2005	3.00	-74.61	5.63	4.00
9/30/2005	3.20	-73.82	5.55	138.10
10/2/2005	3.00	-74.57	5.30	15.10
10/24/2005	3.10	-72.68	5.81	0.00
12/17/2005	3.50	-74.70	4.71	20.00
12/18/2005	3.00	-73.74	5.27	147.20
12/26/2005	3.40	-73.75	5.34	141.10
12/31/2005	3.50	-73.72	5.28	154.20
1/2/2006	3.50	-74.16	5.45	48.00

1/16/2006	3.00	-73.79	4.19	2.00
1/21/2006	4.50	-74.10	3.68	0.00
1/29/2006	3.00	-74.69	4.74	8.00
2/21/2006	3.30	-73.15	5.75	1.90
3/15/2006	3.40	-74.09	3.80	0.00
4/1/2006	3.50	-73.59	4.43	2.00
4/16/2006	3.10	-73.87	5.58	132.00
4/18/2006	3.40	-74.26	3.74	0.10
5/6/2006	3.10	-74.38	5.60	87.00
5/13/2006	3.60	-73.98	5.62	116.80
5/16/2006	3.00	-73.76	5.30	144.00
5/16/2006	3.10	-74.01	5.45	130.00
5/24/2006	5.70	-73.81	4.40	0.30
5/24/2006	4.10	-73.83	4.44	4.00
6/5/2006	3.10	-73.74	5.33	152.00
6/13/2006	3.40	-74.45	3.59	4.00
6/14/2006	3.20	-73.72	5.64	132.00
6/18/2006	4.70	-73.37	4.77	0.50
6/24/2006	3.70	-73.74	5.29	152.00
7/10/2006	3.40	-73.74	5.28	155.70
8/14/2006	3.00	-74.60	5.29	14.30
9/6/2006	4.30	-72.97	5.19	0.00
9/10/2006	3.10	-73.77	5.43	146.00
9/11/2006	3.20	-74.70	4.91	15.80
9/16/2006	3.70	-73.96	5.43	131.20
10/14/2006	3.10	-73.71	5.28	151.20
10/22/2006	3.70	-72.76	5.36	14.60
10/23/2006	3.40	-73.71	5.29	148.90
11/1/2006	3.90	-74.01	5.21	126.50

11/7/2006	3.50	-73.71	5.27	151.80
11/8/2006	3.20	-73.74	5.32	149.40
11/23/2006	3.00	-73.77	5.32	143.30
12/4/2006	3.80	-73.75	5.30	152.00
12/9/2006	3.00	-74.69	4.74	8.00
12/14/2006	3.10	-72.96	5.13	0.10
12/20/2006	3.90	-74.65	4.83	21.70
12/22/2006	3.00	-73.88	5.58	130.70
2/28/2007	3.80	-73.08	4.99	0.70
3/12/2007	3.90	-73.68	5.25	149.50
3/29/2007	3.00	-74.60	5.29	11.20
4/7/2007	3.40	-73.71	5.28	156.90
4/16/2007	3.00	-74.75	4.58	28.30
5/10/2007	3.10	-72.72	5.86	0.00
5/13/2007	3.60	-72.92	5.20	5.40
5/24/2007	3.30	-74.03	5.21	124.70
6/8/2007	3.20	-73.68	5.29	145.10
6/11/2007	3.70	-74.39	3.62	2.00
6/23/2007	3.00	-73.73	5.29	148.80
7/1/2007	3.00	-74.72	4.52	16.10
7/12/2007	3.00	-73.74	5.29	150.30
7/17/2007	3.50	-72.89	5.17	4.20
7/25/2007	3.30	-73.65	5.22	150.60
8/3/2007	3.00	-73.67	5.25	151.00
8/11/2007	3.20	-73.59	5.23	136.00
8/24/2007	3.00	-73.72	5.30	144.70
9/13/2007	4.00	-73.70	5.24	152.80
9/15/2007	3.30	-73.75	5.28	149.40
9/18/2007	3.20	-73.70	5.24	147.00

9/20/2007	3.00	-73.81	5.69	112.00
9/28/2007	3.00	-73.81	5.56	129.80
10/6/2007	3.40	-73.70	5.26	144.30
10/14/2007	3.50	-74.59	5.27	12.00
12/11/2007	3.00	-73.68	5.24	152.10
12/17/2007	3.10	-73.67	5.26	149.80
12/29/2007	3.30	-73.72	5.27	150.90
1/4/2008	3.00	-74.62	4.80	14.20
1/13/2008	3.00	-73.65	5.24	151.40
1/16/2008	3.10	-73.69	5.26	151.90
1/17/2008	3.00	-74.37	3.61	4.00
1/18/2008	3.10	-73.78	5.49	124.40
1/31/2008	3.20	-74.62	4.56	58.60
3/12/2008	3.80	-73.71	5.27	51.70
3/14/2008	3.80	-74.82	4.88	4.00
3/25/2008	4.80	-74.68	5.05	25.90
3/27/2008	4.20	-74.69	5.15	12.00
4/13/2008	3.80	-74.67	5.10	28.00
4/16/2008	3.10	-73.70	5.27	146.90
4/17/2008	3.00	-73.71	5.30	154.60
5/9/2008	3.10	-73.61	5.42	148.30
5/12/2008	3.30	-74.07	5.63	115.30
5/24/2008	3.10	-73.64	4.34	3.90
5/24/2008	4.10	-73.78	4.36	3.90
5/24/2008	4.00	-73.73	4.38	9.90
5/24/2008	3.40	-73.81	4.39	4.00
5/24/2008	3.60	-73.82	4.40	4.00
5/24/2008	5.70	-73.81	4.40	0.30
5/24/2008	3.40	-73.76	4.41	2.90

5/24/2008	4.40	-73.76	4.42	14.00
5/24/2008	4.50	-73.83	4.42	6.30
5/24/2008	3.40	-73.80	4.43	4.00
5/24/2008	4.10	-73.83	4.44	4.00
5/25/2008	4.30	-73.81	4.39	4.00
5/26/2008	3.50	-73.85	4.41	4.00
5/28/2008	4.00	-73.83	4.38	4.00
6/2/2008	3.90	-73.80	4.45	0.00
6/3/2008	3.40	-73.76	4.45	12.40
6/7/2008	3.70	-73.82	4.37	0.30
6/7/2008	3.70	-73.82	4.39	2.90
6/8/2008	3.10	-73.76	5.32	147.00
6/11/2008	3.10	-74.38	3.60	0.00
7/8/2008	3.30	-73.73	4.57	20.20
8/4/2008	3.00	-73.74	5.28	148.60
8/25/2008	3.90	-72.67	5.68	0.00
8/30/2008	3.30	-73.74	5.28	150.00
9/3/2008	3.80	-74.05	5.52	120.80
10/4/2008	3.00	-74.10	3.78	0.00
10/12/2008	3.20	-73.68	4.46	0.00
10/15/2008	3.90	-74.13	3.70	0.00
10/19/2008	3.00	-74.65	4.76	17.30
10/23/2008	3.50	-74.39	5.60	91.50
11/20/2008	3.70	-72.63	5.28	5.70
12/1/2008	3.20	-74.33	5.37	9.50
12/14/2008	3.30	-73.73	5.27	149.00
12/24/2008	3.90	-73.76	5.27	145.60
1/10/2009	3.10	-73.89	4.41	0.00
1/14/2009	3.40	-73.89	5.54	128.70

3/8/2009	3.20	-74.89	4.63	3.40
3/9/2009	3.60	-73.75	5.29	150.00
3/30/2009	3.10	-73.75	5.28	147.70
4/3/2009	3.20	-73.77	5.29	150.40
4/7/2009	4.10	-73.74	5.27	149.30
4/21/2009	3.00	-74.05	4.04	4.10
5/18/2009	3.10	-74.47	5.38	4.00
5/22/2009	4.20	-72.72	5.64	1.20
5/29/2009	3.10	-74.47	5.38	3.90
6/5/2009	3.10	-74.07	4.01	16.60
6/23/2009	3.00	-74.43	3.63	21.50
6/25/2009	3.10	-73.87	5.68	114.40
6/25/2009	3.10	-74.14	5.69	26.30
7/8/2009	3.30	-74.13	3.90	0.00
8/6/2009	3.20	-73.65	4.41	19.80
8/8/2009	3.50	-73.75	5.29	147.30
8/28/2009	3.20	-74.76	4.76	10.70
9/12/2009	3.10	-73.99	5.60	108.00
10/2/2009	3.10	-74.59	5.67	2.50
10/7/2009	3.20	-73.74	5.25	146.00
11/24/2009	4.10	-74.75	5.01	15.50
1/15/2010	3.00	-74.82	4.87	1.10
1/16/2010	3.80	-73.01	5.03	1.10
1/27/2010	3.30	-73.26	4.73	0.00
2/17/2010	3.00	-73.75	5.30	137.90
3/10/2010	3.00	-74.80	4.65	21.50
3/12/2010	3.00	-74.79	4.71	14.00
3/27/2010	3.10	-74.09	3.66	4.00
4/18/2010	3.80	-74.40	3.59	14.90

5/27/2010	3.00	-74.57	5.48	6.60
6/12/2010	3.70	-73.70	4.22	2.40
7/14/2010	3.60	-73.73	5.25	148.40
7/28/2010	3.00	-73.78	5.40	136.30
8/8/2010	3.30	-73.85	5.58	133.80
8/15/2010	3.00	-73.73	5.28	146.20
8/25/2010	3.30	-74.37	5.61	88.60
9/3/2010	3.60	-74.54	4.76	14.00
9/9/2010	3.30	-73.74	5.26	143.70
9/27/2010	3.80	-74.37	5.61	86.30
10/10/2010	3.10	-73.79	5.42	136.50
12/29/2010	3.00	-73.07	5.01	4.00
1/1/2011	3.10	-74.81	4.72	15.40
1/1/2011	3.20	-73.72	5.26	145.20
1/8/2011	3.00	-73.15	5.33	6.50
1/24/2011	3.00	-73.96	5.71	103.70
1/27/2011	4.00	-73.69	4.37	4.00
1/31/2011	3.00	-73.75	5.26	141.10
1/31/2011	3.80	-73.62	5.61	144.80
2/5/2011	3.20	-73.75	5.28	134.60
2/13/2011	3.10	-73.57	4.34	34.40
3/16/2011	3.10	-73.09	5.53	0.40
3/17/2011	3.50	-73.58	4.43	0.00
4/5/2011	3.60	-74.15	5.46	26.70
4/8/2011	3.00	-74.61	4.94	18.00
4/10/2011	3.40	-73.73	5.28	142.60
4/16/2011	3.20	-74.62	4.93	4.40
4/19/2011	3.50	-73.67	4.37	4.00
4/29/2011	3.00	-73.75	5.29	142.30

6/2/2011	3.40	-73.75	5.28	145.80
6/5/2011	3.00	-74.03	5.54	107.60
6/16/2011	3.10	-73.74	5.27	139.10
7/12/2011	3.40	-73.09	5.70	0.00
7/31/2011	3.10	-73.72	4.35	4.20
8/3/2011	3.50	-72.75	5.64	0.10
8/5/2011	3.30	-72.97	5.19	1.90
8/30/2011	3.10	-73.74	5.29	141.40
9/22/2011	3.20	-73.81	5.44	134.70
10/1/2011	3.10	-74.19	3.73	5.00
10/15/2011	3.10	-73.76	5.29	148.20
11/7/2011	3.40	-74.69	4.96	3.10
12/3/2011	3.80	-74.11	3.67	4.00
12/7/2011	3.20	-74.42	3.58	7.70
12/7/2011	3.00	-73.75	5.30	139.70
12/17/2011	3.10	-73.13	4.78	0.20
12/26/2011	3.30	-73.76	5.28	142.10
1/9/2012	3.20	-73.77	5.31	147.20
1/10/2012	3.50	-73.76	5.29	145.30
1/18/2012	3.30	-74.21	3.75	5.40
1/19/2012	3.20	-73.73	5.27	141.30
1/31/2012	4.20	-72.99	5.00	16.10
2/7/2012	3.80	-74.52	4.61	2.40
2/7/2012	3.20	-74.52	4.62	0.10
2/7/2012	3.20	-73.78	5.29	137.10
2/14/2012	3.10	-73.47	4.50	15.20
2/15/2012	3.70	-74.30	3.58	19.40
2/21/2012	3.30	-74.54	4.61	0.00
2/28/2012	3.00	-74.58	4.70	17.80

3/12/2012	3.10	-73.08	5.09	0.00
3/21/2012	3.50	-73.75	5.30	3.50
4/23/2012	3.40	-73.75	5.30	44.90
5/4/2012	3.40	-73.77	5.29	41.70
5/11/2012	3.70	-73.75	5.29	43.10
5/30/2012	4.30	-73.76	5.31	46.00
6/10/2012	3.30	-74.88	4.70	15.30
6/18/2012	3.60	-73.73	5.29	46.20
6/22/2012	3.60	-74.75	5.04	0.00
7/23/2012	3.00	-73.77	5.32	44.30
8/3/2012	3.20	-73.76	5.30	43.70
8/7/2012	3.00	-73.75	5.27	45.30
8/7/2012	3.10	-73.76	5.29	40.80
8/20/2012	4.20	-73.21	5.43	14.20
9/1/2012	3.70	-72.92	5.00	0.00
9/6/2012	3.70	-73.72	4.42	0.00
9/11/2012	3.70	-73.76	5.28	38.40
9/21/2012	3.20	-74.84	4.71	10.70
9/21/2012	3.10	-73.76	5.29	38.80
9/24/2012	3.00	-74.65	5.11	14.00
9/26/2012	3.50	-73.80	4.39	1.10
10/4/2012	3.10	-73.74	5.27	43.20
10/11/2012	3.70	-73.77	5.33	49.60
10/28/2012	3.90	-73.01	5.20	0.00
11/2/2012	3.00	-73.78	5.31	38.70
11/4/2012	3.50	-74.62	4.70	10.80
11/8/2012	3.20	-73.81	4.41	4.00
11/12/2012	3.30	-73.75	5.29	41.60
11/15/2012	3.20	-73.75	5.30	43.90

11/28/2012	3.10	-73.74	5.29	42.50
12/2/2012	3.10	-73.77	5.31	41.00
12/7/2012	3.10	-73.75	5.30	46.70
1/6/2013	3.00	-73.77	5.29	39.90
1/8/2013	3.10	-73.75	5.31	37.10
1/9/2013	3.20	-73.76	5.29	41.40
1/13/2013	3.70	-73.78	5.31	40.10
1/21/2013	3.30	-73.76	5.32	39.60
2/3/2013	3.00	-73.72	5.29	50.00
2/7/2013	3.40	-73.75	5.30	3.40
2/13/2013	3.50	-74.62	4.70	7.20
2/16/2013	3.00	-74.38	5.62	89.40
2/21/2013	3.40	-73.74	5.30	46.40
2/24/2013	3.70	-73.74	5.28	45.10
3/15/2013	3.30	-73.76	5.30	44.90
3/21/2013	3.20	-73.78	5.30	40.60
3/24/2013	3.00	-73.77	5.30	42.50
3/28/2013	3.30	-73.77	5.31	43.90
4/13/2013	3.10	-73.74	5.29	46.80
4/25/2013	3.10	-73.78	5.35	49.40

